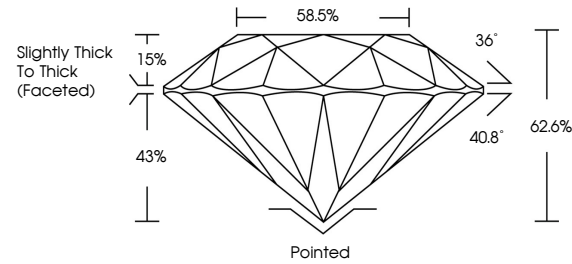




LG455006549

LABORATORY GROWN DIAMOND REPORT

PROPORTIONS



GRADING SCALES

| | | | | | | |
|-----------------------------|------------------------------|-----------------------------|------------------------|-------------------|-----------|---|
| COLOR GRADING SCALE | CL | NC | FT | VL | LT | |
| | COLORLESS D-F | NEAR COLORLESS G-J | FAINT K-M | VERY LIGHT N-R | LIGHT S-Z | |
| CLARITY (10x) GRADING SCALE | FL | IF | VVS | VS | SI | I |
| | FLAWLESS INTERNALLY FLAWLESS | VERY VERY SLIGHTLY INCLUDED | VERY SLIGHTLY INCLUDED | SLIGHTLY INCLUDED | INCLUDED | |

The laboratory grown diamond described in this Report (Report) has been graded, tested, analyzed, examined and/or inscribed by International Gemological Institute (IGI). A laboratory grown diamond is one that has essentially the same chemical, physical and optical properties as a mined diamond, with the exception of being grown by man (a manufactured product). IGI employs and utilizes those techniques and equipment currently available to IGI, including, without limitation, 10X magnification, corrected triplet loupe, binocular microscope, master color comparison stones, non-contact-optical measuring device, Diamond Sure™, Diamond View™, Spectrophotometer and such other instruments and/or processes as deemed appropriate by IGI. This Report includes advanced security features. A duly accredited gemologist or jeweler can advise you with respect to the importance of and interrelationship between cut, color, clarity and carat weight. THIS REPORT IS NEITHER A GUARANTEE, VALUATION, NOR APPRAISAL OF THE GEMSTONE DESCRIBED HEREIN. PLEASE REVIEW THE LIMITATIONS AND RESTRICTIONS SET FORTH ONLINE. FOR ADDITIONAL INFORMATION, IMPORTANT LIMITATIONS AND DISCLAIMERS, PLEASE GO TO WWW.IGI.ORG OR CALL 1-888-BUY-IGIS.

© INTERNATIONAL GEMOLOGICAL INSTITUTE, INC.

01/05/2021

IGI Report Number LG455006549

Shape and Cutting Style ROUND BRILLIANT

Measurements 7.24 - 7.27 x 4.54 mm

GRADING RESULTS

Carat Weight 1.50 CARAT

Color Grade E

Clarity Grade SI 2

Cut Grade VERY GOOD

01/05/2021

IGI Report Number LG455006549

Shape and Cutting Style ROUND BRILLIANT

Measurements 7.24 - 7.27 x 4.54 mm

GRADING RESULTS

Carat Weight 1.50 CARAT

Color Grade E

Clarity Grade SI 2

Cut Grade VERY GOOD

ADDITIONAL GRADING INFORMATION

Polish EXCELLENT

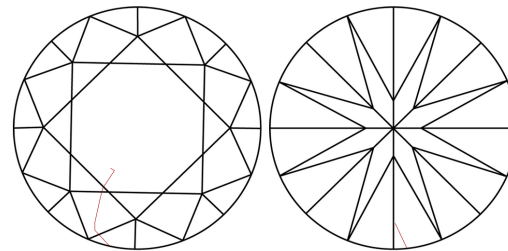
Symmetry EXCELLENT

Fluorescence NONE

Inscription(s) LABGROWN IGI LG455006549

Comments: This Chemical Vapor Deposition (CVD) laboratory grown diamond is classified as Type IIa.

CLARITY CHARACTERISTICS



KEY TO SYMBOLS

Red symbols indicate internal characteristics. Green symbols indicate external characteristics.

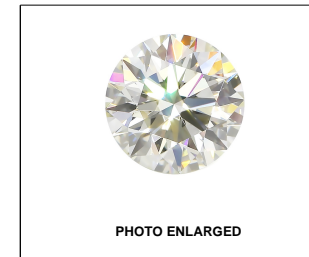
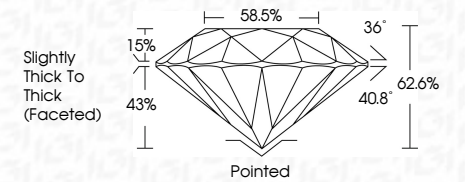


PHOTO ENLARGED



LABGROWN IGI LG455006549

LASERSCRIBESM



ADDITIONAL GRADING INFORMATION

Polish EXCELLENT

Symmetry EXCELLENT

Fluorescence NONE

Inscription(s) LABGROWN IGI LG455006549

Comments: This Chemical Vapor Deposition (CVD) laboratory grown diamond is classified as Type IIa.



IGI

01/05/2021
 IGI Report No. LG455006549
 ROUND BRILLIANT
 7.24 - 7.27 x 4.54 mm
 Carat Weight 1.50 CARAT
 Color Grade E
 Clarity Grade SI 2
 Cut Grade VERY GOOD
 Depth 62.6%
 Table 58.5%
 Girdle Slightly Thick To Thick (Faceted)
 Culet Pointed
 Polish EXCELLENT
 Symmetry EXCELLENT
 Fluorescence NONE
 Inscription(s) LABGROWN IGI LG455006549
 Comments: This Chemical Vapor Deposition (CVD) laboratory grown diamond is classified as Type IIa.