



ELECTRONIC COPY

LABORATORY GROWN DIAMOND REPORT

| | |
|-------------------------|-----------------------------|
| October 13, 2022 | |
| IGI Report Number | LG547275330 |
| Description | LABORATORY GROWN DIAMOND |
| Shape and Cutting Style | ROUND BRILLIANT |
| Measurements | 6.77 - 6.81 X 4.14 MM |

GRADING RESULTS

| | |
|---------------|------------|
| Carat Weight | 1.18 CARAT |
| Color Grade | H |
| Clarity Grade | I 1 |
| Cut Grade | IDEAL |

ADDITIONAL GRADING INFORMATION

| | |
|--------------|-----------|
| Polish | EXCELLENT |
| Symmetry | EXCELLENT |
| Fluorescence | NONE |

Inscription(s) **LABGROWN  LG547275330**

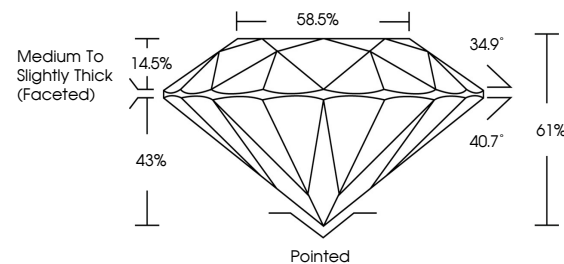
Comments: This Laboratory Grown Diamond was created by Chemical Vapor Deposition (CVD) growth process and may include post-growth treatment.
Type IIa

LABORATORY GROWN DIAMOND REPORT

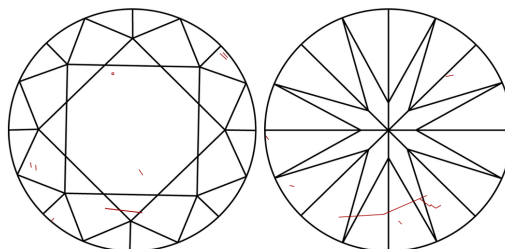
LG547275330

Report verification at igi.org

PROPORTIONS



CLARITY CHARACTERISTICS



KEY TO SYMBOLS

Red symbols indicate internal characteristics.
Green symbols indicate external characteristics.

LABORATORY GROWN
DIAMOND REPORT

GRADING SCALES

CLARITY

| IF | VVS ¹⁻² | VS ¹⁻² | SI ¹⁻² | I ¹⁻³ |
|------------------------|--------------------------------|---------------------------|----------------------|------------------|
| Internally Flawless | Very Very Slightly Included | Very Slightly Included | Slightly Included | Included |

COLOR

D E F G H I J Faint Very Light Light

LASERSCRIBESM

Sample Image Used



© IGI 2020, International Gemological Institute

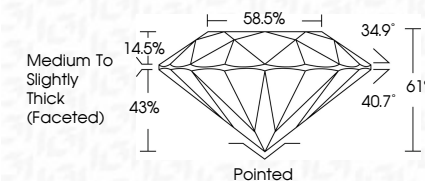
FD - 10 20



LABORATORY GROWN DIAMOND REPORT

| | |
|-------------------------|-----------------------------|
| October 13, 2022 | |
| IGI Report Number | LG547275330 |
| Description | LABORATORY GROWN DIAMOND |
| Shape and Cutting Style | ROUND BRILLIANT |
| Measurements | 6.77 - 6.81 X 4.14 MM |

| GRADING RESULTS | |
|-----------------|------------|
| Carat Weight | 1.18 CARAT |
| Color Grade | H |
| Clarity Grade | I1 |
| Cut Grade | IDEAL |



ADDITIONAL GRADING INFORMATION

| | |
|----------------|---------------------------|
| Polish | EXCELLENT |
| Symmetry | EXCELLENT |
| Fluorescence | NONE |
| Inscription(s) | LABGROWN 1531 LG547275330 |

Comments: This Laboratory Grown Diamond was created by Chemical Vapor Deposition (CVD) growth process and may include post-growth treatment.
Type IIa

| | |
|-------------------------------------------------------------------------------------------------------------------------------------------|------------------------------------|
| October 13, 2022 | Report No. LG547275330 |
| GROWN BRILLIANT | |
| 1.18 CARAT | 1.18 CARAT |
| H | H |
| 1 1/2 | 1 1/2 |
| IDEAL | IDEAL |
| 61% | 61% |
| 59.5% | 59.5% |
| Medium To Slightly Thick (rounded) | Medium To Slightly Thick (rounded) |
| Polished | Polished |
| EXCELLENT | EXCELLENT |
| EXCELLENT | EXCELLENT |
| NONE | NONE |
| LAB GROWN (GSI) | LAB GROWN (GSI) |
| LG547275330 | LG547275330 |
| Comments: | |
| This Laboratory Grown Diamond was created using the Chemical Vapor Deposition (CVD) growth process and may include post-growth treatment. | |
| Type IIA | |