

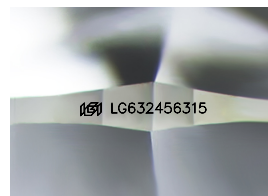
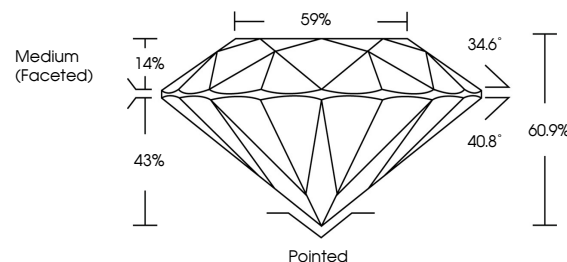


ELECTRONIC COPY

LABORATORY GROWN DIAMOND REPORT

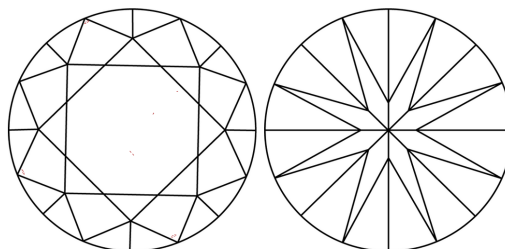
LG632456315
Report verification at lgi.org

PROPORTIONS



Sample Image Used

CLARITY CHARACTERISTICS



KEY TO SYMBOLS

Red symbols indicate internal characteristics.
Green symbols indicate external characteristics.

COLOR

D E F G H I J Faint Very Light Light

CLARITY

IF	VVS ¹⁻²	VS ¹⁻²	SI ¹⁻²	I ¹⁻³
Internally Flawless	Very Very Slightly Included	Very Slightly Included	Slightly Included	Included



© IGI 2020, International Gemological Institute

FD - 10 20

www.igi.org

DIAMOND REPORT



May 2, 2024

IGI Report Number **LG632456315**Description **LABORATORY GROWN DIAMOND**Shape and Cutting Style **ROUND BRILLIANT**

Measurements	7.35 - 7.42 X 4.50 MM
--------------	-----------------------

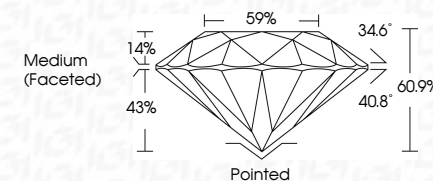
GRADING RESULTS

Carat Weight **1.51 CARAT**

Color Grade E

Clarity Grade VS 1

Cut Grade **IDEAL**



ADDITIONAL GRADING INFORMATION

Polish **EXCELLENT**Symmetry **EXCELLENT**Fluorescence **NONE**Inscription(s) LG632456315

Comments: This Laboratory Grown Diamond was created by Chemical Vapor Deposition (CVD) growth process and may include post-growth treatment.
Type IIa



May 2, 2024	Q1 Report No. LG302465915	ROUND BRILLIANT	7.35 - 7.42 X 4.50 MM	1.51 CARAT	E	VS 1	IDEAL	60.1%	89%	(Medium Faceted)	Poorly Ported	EXCELLENT	EXCELLENT	NONE	1691 LG302465915
GI Report No.	Color Weight	Color Grade	Clarity Grade	Cut Grade	Depth	Table	Girdle	Symmetry	Fluorescence	Inscriptions(s)	Comments: This Round Brilliant was created by Chemical Vapor Deposition (CVD) growth process and may include post-growth treatment. Type IIa				