



ELECTRONIC COPY

LABORATORY GROWN DIAMOND REPORT

April 4, 2024	
IGI Report Number	LG628491300
Description	LABORATORY GROWN DIAMOND
Shape and Cutting Style	ROUND BRILLIANT
Measurements	8.21 - 8.26 X 5.05 MM

GRADING RESULTS

Carat Weight	2.07 CARATS
Color Grade	H
Clarity Grade	VVS 2
Cut Grade	IDEAL

ADDITIONAL GRADING INFORMATION

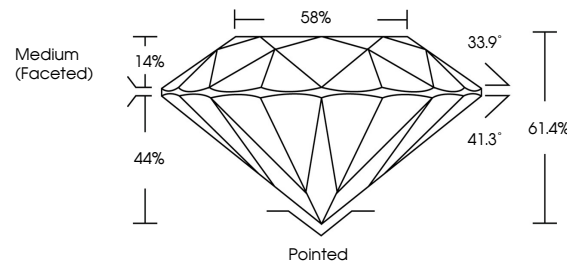
Polish	EXCELLENT
Symmetry	EXCELLENT
Fluorescence	NONE
Inscription(s)	LG628491300

Comments: This Laboratory Grown Diamond was created by Chemical Vapor Deposition (CVD) growth process and may include post-growth treatment.
Type IIa

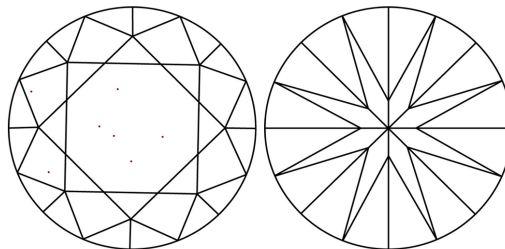
LABORATORY GROWN DIAMOND REPORT

LG628491300
Report verification at igi.org

PROPORTIONS



CLARITY CHARACTERISTICS



KEY TO SYMBOLS

Red symbols indicate internal characteristics.
Green symbols indicate external characteristics.

LABORATORY GROWN
DIAMOND REPORT

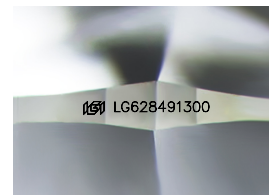
GRADING SCALES

CLARITY

IF	VVS ¹⁻²	VS ¹⁻²	SI ¹⁻²	I ¹⁻³
Internally Flawless	Very Very Slightly Included	Very Slightly Included	Slightly Included	Included

COLOR

D E F G H I J Faint Very Light Light



Sample Image Used



© IGI 2020, International Gemological Institute

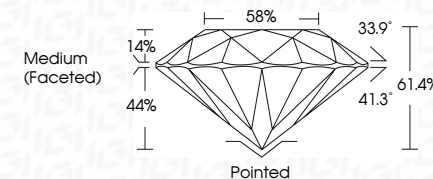
FD - 10 20

LABORATORY GROWN DIAMOND REPORT

April 4, 2024	
IGI Report Number	LG628491300
Description	LABORATORY GROWN DIAMOND
Shape and Cutting Style	ROUND BRILLIANT
Measurements	8.21 - 8.26 X 5.05 MM

GRADING RESULTS

Carat Weight	2.07 CARATS
Color Grade	H
Clarity Grade	VVS 2
Cut Grade	IDEAL



ADDITIONAL GRADING INFORMATION

Polish	EXCELLENT
Symmetry	EXCELLENT
Fluorescence	NONE
Inscription(s)	 LG628491300

Comments: This Laboratory Grown Diamond was created by Chemical Vapor Deposition (CVD) growth process and may include post-growth treatment.
Type IIa



April 4, 2024	GI report No. LG284971300
ROUND BRILLIANT	
2.07 CARATS	
2.21 - 6.26 X 5.05 MM	
Color: Weight	
Color Grade	
Clarity Grade	
Cut Grade	
Depth	
Table	
Girdle	
Medium (Faceted)	
Ported	
EXCELLENT	
EXCELLENT	
NONE	
(#) LG284971300	
Comments:	
Created by Crown Diamond Inc.	
Graded by Crown Diamond Inc.	
(CVD) growth process and may include post-growth treatment.	
Type IIA	

www.igi.org