



**ELECTRONIC COPY**

## LABORATORY GROWN DIAMOND REPORT

October 16, 2022	
IGI Report Number	LG551202005
Description	LABORATORY GROWN DIAMOND
Shape and Cutting Style	CUT CORNERED RECTANGULAR MODIFIED BRILLIANT
Measurements	8.15 X 5.89 X 3.95 MM

## GRADING RESULTS

Carat Weight	1.66 CARAT
Color Grade	F
Clarity Grade	VS 2

### ADDITIONAL GRADING INFORMATION

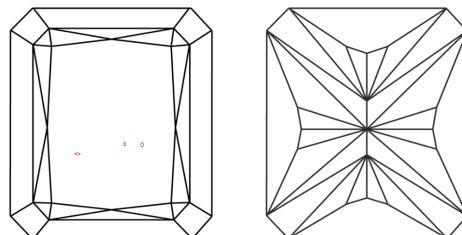
Polish	EXCELLENT
Symmetry	EXCELLENT
Fluorescence	NONE

Inscription(s) **LABGROWN  LG551202005**  
 Comments: This Laboratory Grown Diamond was created by Chemical Vapor Deposition (CVD) growth process and may include post-growth treatment.  
 Type IIa

Diagram illustrating the proportions of a diamond-shaped roof structure (LG551202005). The structure is defined by a horizontal top edge, a horizontal bottom edge, and two vertical side edges. The proportions are indicated by dimension lines and percentages:

- The top horizontal edge is labeled 65%.
- The bottom horizontal edge is labeled 51.5%.
- The left vertical edge is labeled 11%.
- The right vertical edge is labeled 67.1%.

## CLARITY CHARACTERISTICS

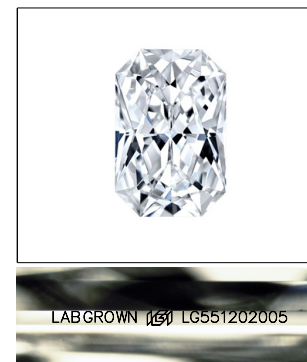


## KEY TO SYMBOLS

Red symbols indicate internal characteristics.  
Green symbols indicate external characteristics.

## GRADING SCALES

COLOR GRADING SCALE	CL		NC	FT	VLT	LT
	COLORLESS D-F		NEAR COLORLESS G-J	FAINT K-M	VERY LIGHT N-R	LIGHT S-Z
CLARITY (10x) GRADING SCALE	FL	IF	VVS	VS	SI	I
	FLAWLESS INTERNALLY FLAWLESS		VERY VERY SLIGHTLY INCLUDED	VERY SLIGHTLY INCLUDED	SLIGHTLY INCLUDED	INCLUDED

LASERSCRIBE<sup>SM</sup>

Sample Image Used



© IGI 2020, International Gemological Institute

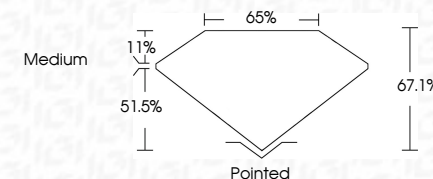
FD - 10 20

**www.igi.org**

## LABORATORY GROWN DIAMOND REPORT

October 16, 2022	
IGI Report Number	LG551202005
Description	LABORATORY GROWN DIAMOND
Shape and Cutting Style	CUT CORNERED RECTANGULAR MODIFIED BRILLIANT
Measurements	8.15 X 5.89 X 3.95 MM

Carat Weight	1.66 CARAT
Color Grade	F
Clarity Grade	VS 2



### ADDITIONAL GRADING INFORMATION

Polish	EXCELLENT
Symmetry	EXCELLENT
Fluorescence	NONE
Inscription(s)	LABGROWN (15) LG551202005

Comments: This Laboratory Grown Diamond was created by Chemical Vapor Deposition (CVD) growth process and may include post-growth treatment.  
Type IIa



October 14, 2022	Color Grade	1.66 CARAT	Pointed
GJ Report No. LG551202005	Clarity Grade	VS 2	EXCELLENT
2 CUT CORNERED BEC1, MODIFIED	Depth	67.1%	EXCELLENT
1.15 X 5.59 X 3.95 MM	Table	65%	NONE
	Girdle	Medium	LARGE GROWN (69)
			LG561202005
			Comments:
			This Laboratory Grown Diamond was
			grown by Chemical Vapor Deposition
			(CVD) growth process and may include
			post-growth treatment.
			Type IIA