



**INTERNATIONAL
GEMOLOGICAL
INSTITUTE**

ELECTRONIC COPY

LABORATORY GROWN DIAMOND REPORT

May 2, 2024	
IGI Report Number	LG632454880
Description	LABORATORY GROWN DIAMOND
Shape and Cutting Style	ROUND BRILLIANT
Measurements	6.44 - 6.46 X 3.99 MM

GRADING RESULTS

Carat Weight	1.02 CARAT
Color Grade	E
Clarity Grade	VS 1
Cut Grade	IDEAL

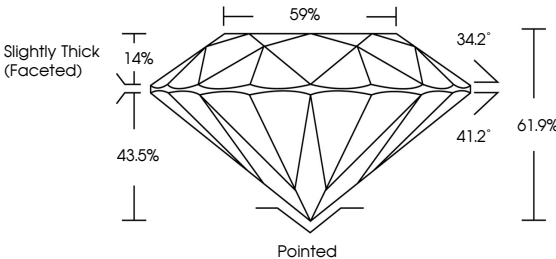
ADDITIONAL GRADING INFORMATION

Polish	EXCELLENT
Symmetry	EXCELLENT
Fluorescence	NONE
Inscription(s)	 LG632454880

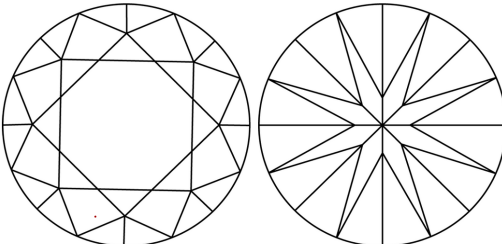
Comments: This Laboratory Grown Diamond was created by Chemical Vapor Deposition (CVD) growth process and may include post-growth treatment.
Type IIa

Report verification at [igi.org](https://www.igi.org)

PROPORTIONS

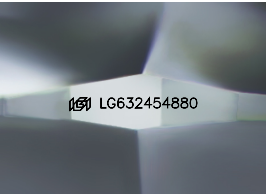


CLARITY CHARACTERISTICS



KEY TO SYMBOLS

Red symbols indicate internal characteristics.
Green symbols indicate external characteristics.



Sample Image Used

COLOR

D E F G H I J Faint Very Light Light

CLARITY

IF	VVS ¹⁻²	VS ¹⁻²	SI ¹⁻²	I ¹⁻³
Internally Flawless	Very Very Slightly Included	Very Slightly Included	Slightly Included	Included



© IGI 2020, International Gemological Institute

FD - 10 20

DIAMOND REPORT



May 2, 2024

IGI Report Number **LG632454880**

Description **LABORATORY GROWN DIAMOND**Shape and Cutting Style **ROUND BRILLIANT**

Measurements 6.44 - 6.46 X 3.99 MM

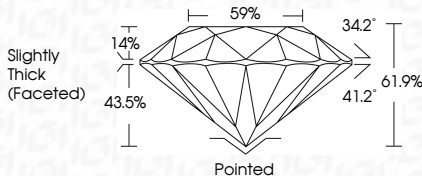
GRADING RESULTS

Carat Weight 1.02 CARAT

Color Grade E

Clarity Grade VS 1

Cut Grade **IDEAL**



ADDITIONAL GRADING INFORMATION

Polish EXCELLENCE

Symmetry **EXCELLENCE**Fluorescence NONI

Inscription(s) LG632454880

Comments: This Laboratory Grown Diamond was created by Chemical Vapor Deposition (CVD) growth process and may include post-growth treatment.
Type IIa



IGI

May 2, 2024		IGI Report No. LG632454980	
ROUND BRILLIANT			
1.02 CARAT		E	
Carat Weight	4.64 - 4.66 X 3.99 MM	VS1	IDEAL
Color Grade		61.9%	59%
Clarity Grade		Slightly Thick (Feetted)	
Depth		Pointed	Excellent
Table		Excellent	None
Girdle		161 LG632454980	
Culet		Comments:	
Polish		This Laboratory Grown Diamond was	
Symmetry		created by Chemical Vapor Deposition	
Fluorescence		(CVD) growth process and may include	
Descriptions(s)		with treatment.	
		Type Iia	