



ELECTRONIC COPY

LABORATORY GROWN DIAMOND REPORT

May 23, 2022
IGI Report Number LG524212747
Description LABORATORY GROWN DIAMOND
Shape and Cutting Style ROUND BRILLIANT
Measurements 6.81 - 6.87 X 4.12 MM

GRADING RESULTS

Carat Weight 1.17 CARAT
Color Grade G
Clarity Grade VS 1
Cut Grade EXCELLENT

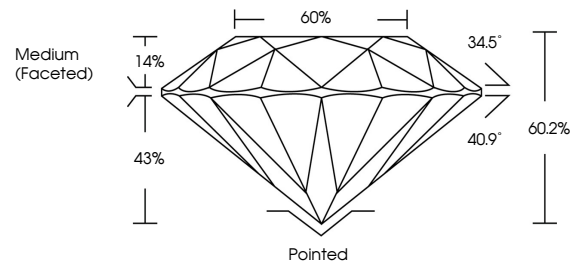
ADDITIONAL GRADING INFORMATION

Polish EXCELLENT
Symmetry EXCELLENT
Fluorescence NONE
Inscription(s) LABGROWN IGI LG524212747

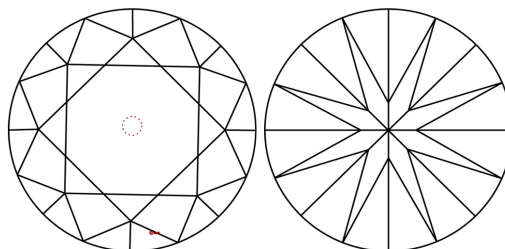
Comments: HEARTS & ARROWS
Hearts and Arrows pattern viewable with H&A scope.
This Laboratory Grown Diamond was created by Chemical Vapor Deposition (CVD) growth process and may include post-growth treatment.
Type IIa

LG524212747

PROPORTIONS

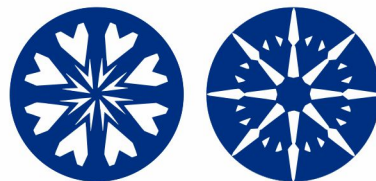


CLARITY CHARACTERISTICS



KEY TO SYMBOLS

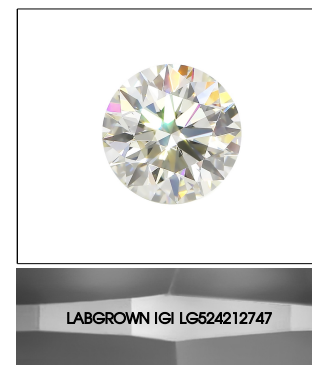
Red symbols indicate internal characteristics.
Green symbols indicate external characteristics.



www.igi.org

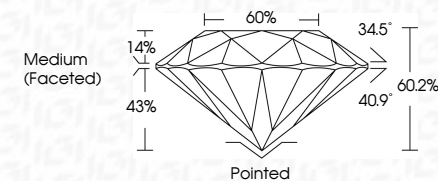
GRADING SCALES

Table with 2 rows: COLOR GRADING SCALE (CL, NC, FT, VLT, LT) and CLARITY (10x) GRADING SCALE (FL, IF, VVS, VS, SI, I).



LASERSCRIBE SM
Sample Image Used

May 23, 2022
IGI Report Number LG524212747
Description LABORATORY GROWN DIAMOND
Shape and Cutting Style ROUND BRILLIANT
Measurements 6.81 - 6.87 X 4.12 MM
GRADING RESULTS
Carat Weight 1.17 CARAT
Color Grade G
Clarity Grade VS 1
Cut Grade EXCELLENT



ADDITIONAL GRADING INFORMATION

Polish EXCELLENT
Symmetry EXCELLENT
Fluorescence NONE
Inscription(s) LABGROWN IGI LG524212747

Comments: HEARTS & ARROWS
Hearts and Arrows pattern viewable with H&A scope.
This Laboratory Grown Diamond was created by Chemical Vapor Deposition (CVD) growth process and may include post-growth treatment.
Type IIa



May 23, 2022
IGI Report No. LG524212747
ROUND BRILLIANT
6.81 - 6.87 X 4.12 MM
Carat Weight 1.17 CARAT
Color Grade G
Clarity Grade VS 1
Cut Grade EXCELLENT
Depth 60.2%
Table 65%
Girdle Medium (Faceted)
Culet Pointed
Polish EXCELLENT
Symmetry EXCELLENT
Fluorescence NONE
Inscription(s) LABGROWN IGI LG524212747
Comments: HEARTS & ARROWS
Hearts and Arrows pattern viewable with H&A scope.
This Laboratory Grown Diamond was created by Chemical Vapor Deposition (CVD) growth process and may include post-growth treatment.