



ELECTRONIC COPY

LABORATORY GROWN DIAMOND REPORT

LG578347102

Report verification at igi.org

**LABORATORY GROWN
DIAMOND REPORT**

LABORATORY GROWN DIAMOND REPORT

LABORATORY GROWN DIAMOND REPORT

April 26, 2023
IGI Report Number **LG578347102**
Description **LABORATORY GROWN
DIAMOND**
Shape and Cutting Style **ROUND BRILLIANT**
Measurements **8.68 - 8.73 X 5.39 MM**

GRADING RESULTS

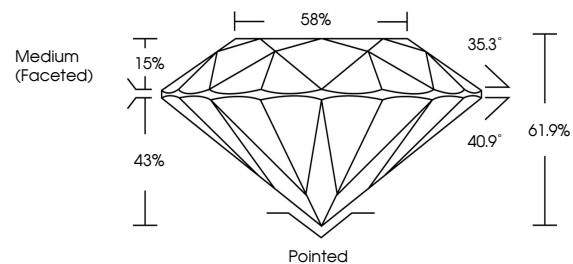
Carat Weight **2.52 CARATS**
Color Grade **F**
Clarity Grade **SI 1**
Cut Grade **IDEAL**

ADDITIONAL GRADING INFORMATION

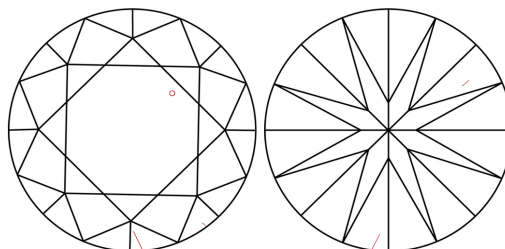
Polish **EXCELLENT**
Symmetry **EXCELLENT**
Fluorescence **NONE**
Inscription(s) **IGI LG578347102**

Comments: This Laboratory Grown Diamond was created by Chemical Vapor Deposition (CVD) growth process and may include post-growth treatment. Type IIa

PROPORTIONS



CLARITY CHARACTERISTICS



KEY TO SYMBOLS

Red symbols indicate internal characteristics.
Green symbols indicate external characteristics.

GRADING SCALES

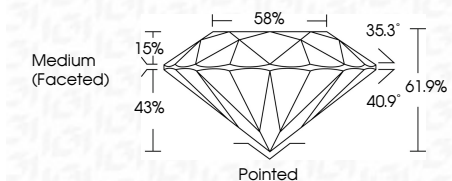
CLARITY

IF	VVS ¹⁻²	VS ¹⁻²	SI ¹⁻²	I ¹⁻³
Internally Flawless	Very Very Slightly Included	Very Slightly Included	Slightly Included	Included

COLOR

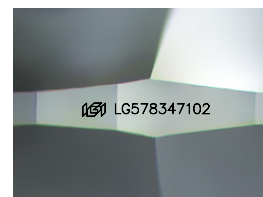
D	E	F	G	H	I	J	Faint	Very Light	Light
---	---	---	---	---	---	---	-------	------------	-------

April 26, 2023
IGI Report Number **LG578347102**
Description **LABORATORY GROWN
DIAMOND**
Shape and Cutting Style **ROUND BRILLIANT**
Measurements **8.68 - 8.73 X 5.39 MM**
GRADING RESULTS
Carat Weight **2.52 CARATS**
Color Grade **F**
Clarity Grade **SI 1**
Cut Grade **IDEAL**



ADDITIONAL GRADING INFORMATION

Polish **EXCELLENT**
Symmetry **EXCELLENT**
Fluorescence **NONE**
Inscription(s) **IGI LG578347102**
Comments: This Laboratory Grown Diamond was created by Chemical Vapor Deposition (CVD) growth process and may include post-growth treatment. Type IIa



Sample Image Used



IGI

April 26, 2023
IGI Report No LG578347102
ROUND BRILLIANT
8.68 - 8.73 X 5.39 MM
Carat Weight **2.52 CARATS**
Color Grade **F**
Clarity Grade **SI 1**
Cut Grade **IDEAL**
Depth **61.9%**
Table **58%**
Girdle **Medium (Faceted)**
Culet **Pointed**
Polish **EXCELLENT**
Symmetry **EXCELLENT**
Fluorescence **NONE**
Inscriptions(s) **IGI LG578347102**
Comments: This Laboratory Grown Diamond was created by Chemical Vapor Deposition (CVD) growth process and may include post-growth treatment. Type IIa