



**INTERNATIONAL
GEMOLOGICAL
INSTITUTE**

Expertise issued by IGI DUBAI
Almas Tower - 27 A, B, C & G
Jumeirah Lakes Towers, Dubai - 57664
Tel. +971 4 450 8027 - Fax. +971 4 450 8023
E-mail - dubai@igiworldwide.com
www.igiworldwide.com

LABORATORY GROWN DIAMOND REPORT

NUMBER LG_175587836

DUBAI, October 11, 2015

Red symbols denote internal characteristics (inclusions). Green or black symbols denote external characteristics (blemishes). Diagram is an approximate representation of this stone, and symbols shown indicate type, position, and approximate size of clarity characteristics. All clarity characteristics may not be shown. Details of finish are not shown.

DESCRIPTION LABORATORY GROWN DIAMOND
SHAPE AND CUT ROUND BRILLIANT

CARAT WEIGHT 1.50 CARAT
COLOR GRADE H
CLARITY GRADE I 1
CUT GRADE EXCELLENT

POLISH VERY GOOD
SYMMETRY VERY GOOD

Measurements 7.43 - 7.45 x 4.52 mm

Table Size 57.5%

Crown Height - Angle 14.5% - 35°

Pavilion Depth - Angle 43% - 40.9°

Girdle Thickness MEDIUM

Culet POINTED

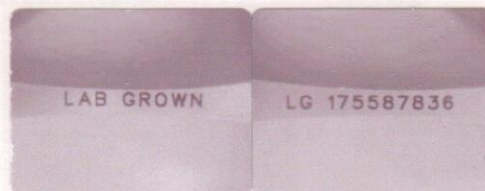
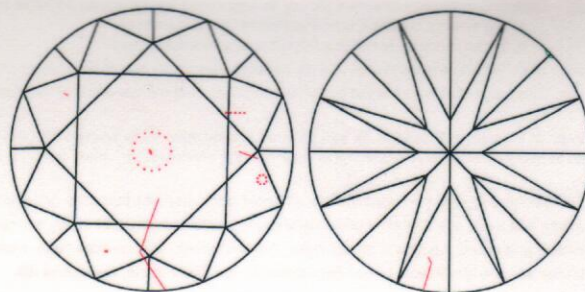
Total Depth 60.7%

FLUORESCENCE NONE

COMMENTS

IDEAL CUT ROUND BRILLIANT

The laboratory grown diamond described above is classified as Type IIa. Laserscribe on Girdle: "LAB GROWN LG 175587836"



COLOR
GRADING
SCALE

CLARITY (10X)
GRADING
SCALE

CL	NC	FT	VLT	LT
COLORLESS D - F	NEAR COLORLESS G - J	FAINT K - M	VERY LIGHT N - R	LIGHT S - Z
FL IF	VVS VS	SI	I	
FLAWLESS INTERNALLY FLAWLESS	VERY VERY SLIGHTLY INCLUDED	VERY SLIGHTLY INCLUDED	SLIGHTLY INCLUDED	INCLUDED

The laboratory grown diamond described in this Report ("Report") has been graded, tested, analyzed, examined and/or inscribed by International Gemological Institute (IGI). A laboratory grown diamond is one that has the same chemical, physical and optical properties as mined diamond, with the exception of being grown by man. IGI employs and utilizes those techniques and equipment currently available to IGI, including, without limitation, 10X magnification, corrected triplet loupe and binocular microscope, master color comparison system, non-contact-optical measuring device, and such other instruments and/or processes as deemed appropriate by IGI. This Report includes advanced security features. A duly accredited gemologist or jeweler can advise you with respect to the importance of and interrelationship between cut, color, clarity and carat weight.
THIS REPORT IS NEITHER A GUARANTEE, VALUATION NOR APPRAISAL OF THE LABORATORY GROWN DIAMOND DESCRIBED HEREIN.