



**ELECTRONIC COPY**

## LABORATORY GROWN DIAMOND REPORT

February 13, 2022	
IGI Report Number	LG502120687
Description	LABORATORY GROWN DIAMOND
Shape and Cutting Style	ROUND BRILLIANT
Measurements	7.16 - 7.20 X 4.39 MM

## GRADING RESULTS

Carat Weight	1.38 CARAT
Color Grade	H
Clarity Grade	VVS 2
Cut Grade	IDEAL

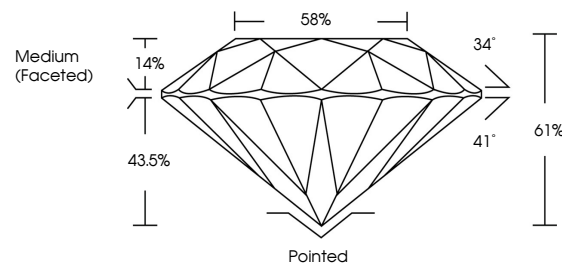
### ADDITIONAL GRADING INFORMATION

Polish	EXCELLENT
Symmetry	EXCELLENT
Fluorescence	NONE
Inscription(s)	LABGROWN   G1 G502120687

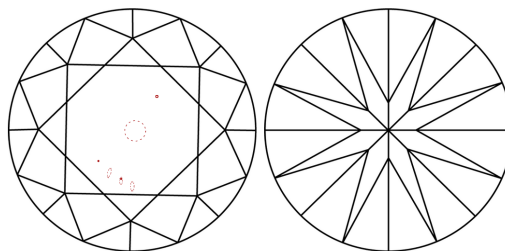
Comments: This Laboratory Grown Diamond was created by Chemical Vapor Deposition (CVD) growth process and may include post-growth treatment Type IIa

LG502120687

## PROPORTIONS



## CLARITY CHARACTERISTICS



### KEY TO SYMBOLS

Red symbols indicate internal characteristics.  
Green symbols indicate external characteristics.

LABORATORY GROWN  
DIAMOND REPORT

## GRADING SCALES

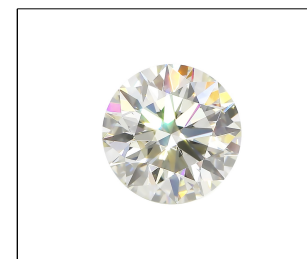
COLOR GRADING SCALE	CL		NC		FT		VLT		LT	
	COLORLESS D-F		NEAR COLORLESS G-J		FAINT K-M		VERY LIGHT N-R		LIGHT S-Z	
CLARITY (10x) GRADING SCALE	FL IF		VVS		VS		SI		I	
	FLAWLESS INTERNALLY FLAWLESS		VERY VERY SLIGHTLY INCLUDED		VERY SLIGHTLY INCLUDED		SLIGHTLY INCLUDED		INCLUDED	

The laboratory growndiamond described in this Report (Report) has been graded, tested, analyzed, examined and/or inscribed by International Gemological Institute (I.G.I.). A laboratory grown diamond is one that has essentially the same chemical, physical and optical properties as a mined diamond, with the exception of having grown by man's manipulation of natural elements and/or processes. I.G.I. uses the following term currently applicable to I.G.I., including, without limitation, 10X magnification, corrected triplet lense, binocular microscope, master color comparison stones, non-contact optical property device, and/or other instruments and/or processes, to describe the diamond. I.G.I. instruments and/or processes as deemed appropriate by I.G.I. This Report includes advanced security features. A duly accredited gemologist or jeweler can advise you with respect to the importance of and interrelationship between cut, color, clarity and carat weight.

**THIS REPORT IS NEITHER A GUARANTEE, VALUATION, NOR APPRAISAL OF THE GEMSTONE DESCRIBED HEREIN. INFORMATION, STATEMENTS, LIMITATIONS AND RESTRICTIONS SET FORTH ONLINE, FORM OR OTHERWISE, ARE NOT TO BE CONSIDERED A GUARANTEE, VALUATION, APPRAISAL, OR ANY OTHER FORM OF INSURANCE. PLEASE SEE THE LIMITATIONS AND DISCLAIMERS, PLEASE GO TO WWW.IGI.ORG FOR A FULLER DISCUSSION OF THESE LIMITATIONS AND DISCLAIMERS.**

WWW.IGI.ORG TEL: 1-888-BUY-IGI

© INTERNATIONAL GEMOLOGICAL INSTITUTE, INC.



LABGROWN | G | LG502120687

LASERSCRIBE<sup>SM</sup>

Sample Image Used



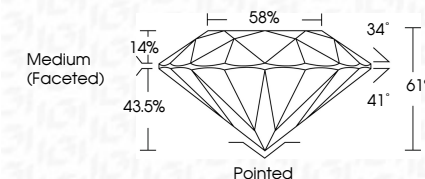
© IGI 2020, International Gemological Institute

FD - 10 20

THIS DOCUMENT WAS PRODUCED WITH THE FOLLOWING SECURITY MEASURES: SPECIAL DOCUMENT PAPER, INK SCREENS, WATERMARK BACKGROUND DESIGNS, HOLOGRAM AND OTHER SECURITY FEATURES NOT LISTED AND DO EXCEED DOCUMENT SECURITY INDUSTRY GUIDELINES

## LABORATORY GROWN DIAMOND REPORT

February 13, 2022	
IGI Report Number	LG502120687
Description	LABORATORY GROWN DIAMOND
Shape and Cutting Style	ROUND BRILLIANT
Measurements	7.16 - 7.20 X 4.39 MM
<b>GRADING RESULTS</b>	
Carat Weight	1.38 CARAT
Color Grade	H
Clarity Grade	VVS 2
Cut Grade	IDEAL



### ADDITIONAL GRADING INFORMATION

Polish	EXCELLENT
Symmetry	EXCELLENT
Fluorescence	NONE
Inscription(s)	LABGROWN IGI LG502120687

Inscription(s) LABGROWN IGI LG502120687

Comments: This Laboratory Grown Diamond was created by Chemical Vapor Deposition (CVD) growth process and may include post-growth treatment  
Type IIa



February 13, 2022	IGI Report No. LG502120487
ROUND BRILLIANT	
Wt. 1.16 - 1.20 X 4.39 MM	
Color	1.38 CARAT
Color Grade	H
Clarity Grade	VVS 2
Cut Grade	IDEAL
Depth	61%
Table	59%
Grade	Medium (Faceted)
Quief	Pointed
Polish	EXCELLENT
Symmetry	EXCELLENT
Fluorescence	NONE
Inscriptions(s)	LABGROWN IGI LG502120487
<b>Comments:</b> This Laboratory Grown Diamond was created by Chemical Vapor Deposition (CVD) growth process and may include post-growth treatment	