

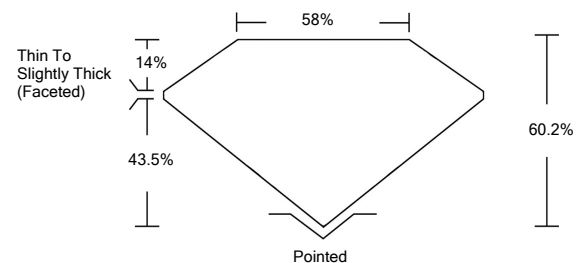


ELECTRONIC COPY

LABORATORY GROWN DIAMOND REPORT

LG533216157

PROPORTIONS



GRADING SCALES

COLOR GRADING SCALE	CL	NC	FT	VL	LT	
	COLORLESS D-F	NEAR COLORLESS G-J	FAINT K-M	VERY LIGHT N-R	LIGHT S-Z	
CLARITY (10x) GRADING SCALE	FL	IF	VVS	VS	SI	I
	FLAWLESS INTERNALLY FLAWLESS	VERY VERY SLIGHTLY INCLUDED	VERY SLIGHTLY INCLUDED	SLIGHTLY INCLUDED	INCLUDED	

June 15, 2022

IGI Report Number

LG533216157

Description

**LABORATORY GROWN
DIAMOND**

Shape and Cutting Style

OVAL BRILLIANT

Measurements

8.42 X 5.83 X 3.51 MM

GRADING RESULTS

Carat Weight

1.06 CARAT

Color Grade

I

Clarity Grade

VVS 2

June 15, 2022

IGI Report Number

LG533216157

Description

**LABORATORY GROWN
DIAMOND**

Shape and Cutting Style

OVAL BRILLIANT

Measurements

8.42 X 5.83 X 3.51 MM

GRADING RESULTS

Carat Weight

1.06 CARAT

Color Grade

I

Clarity Grade

VVS 2

ADDITIONAL GRADING INFORMATION

Polish

EXCELLENT

Symmetry

EXCELLENT

Fluorescence

NONE

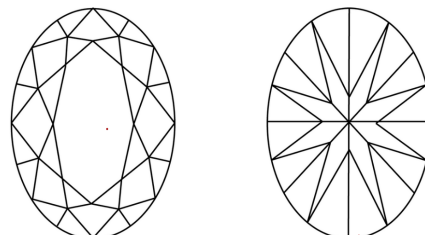
Inscription(s)

LABGROWN IGI LG533216157

Comments: This Laboratory Grown Diamond was created by Chemical Vapor Deposition (CVD) growth process and may include post-growth treatment.

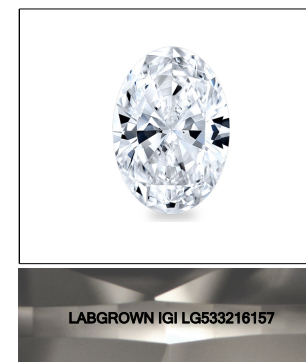
Type IIa

CLARITY CHARACTERISTICS



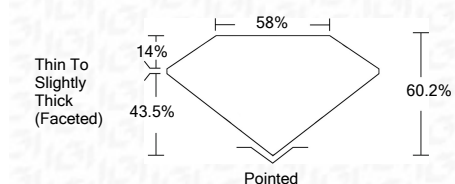
KEY TO SYMBOLS

Red symbols indicate internal characteristics.
Green symbols indicate external characteristics.



LASERSCRIBESM

Sample Image Used



ADDITIONAL GRADING INFORMATION

Polish

EXCELLENT

Symmetry

EXCELLENT

Fluorescence

NONE

Inscription(s)

LABGROWN IGI LG533216157

Comments: This Laboratory Grown Diamond was created by Chemical Vapor Deposition (CVD) growth process and may include post-growth treatment.

Type IIa



IGI



IGI Report No. LG533216157	1.06 CARAT	I	Pointed
OVAL BRILLIANT	VVS 2	EXCELLENT	EXCELLENT
8.42 X 5.83 X 3.51 MM	60.2%	EXCELLENT	EXCELLENT
Carat Weight	58%	EXCELLENT	EXCELLENT
Color Grade	Thin To Slightly Thick (Faceted)	NONE	NONE
Clarity Grade	LABGROWN IGI LG533216157	LABGROWN IGI LG533216157	LABGROWN IGI LG533216157
Depth			
Table			
Girdle			
Culet			
Polish			
Symmetry			
Fluorescence			
Inscription(s)			
Comments:			

This Laboratory Grown Diamond was created by Chemical Vapor Deposition (CVD) growth process and may include post-growth treatment. Type IIa