



ELECTRONIC COPY

LABORATORY GROWN DIAMOND REPORT

April 5, 2024	
IGI Report Number	LG628489396
Description	LABORATORY GROWN DIAMOND
Shape and Cutting Style	SQUARE CUSHION BRILLIANT
Measurements	6.76 X 6.75 X 4.41 MM

GRADING RESULTS

Carat Weight	1.54 CARAT
Color Grade	E
Clarity Grade	VS 1

ADDITIONAL GRADING INFORMATION

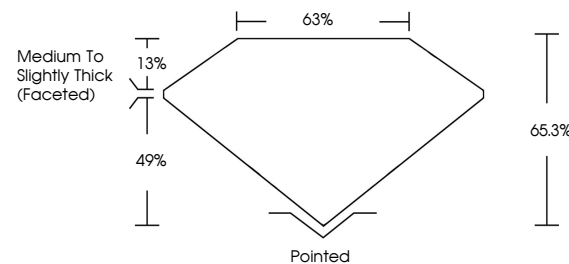
Polish	EXCELLENT
Symmetry	EXCELLENT
Fluorescence	NONE
Inscription(s)	 LG628489396

Comments: This Laboratory Grown Diamond was created by Chemical Vapor Deposition (CVD) growth process and may include post-growth treatment.
Type IIa

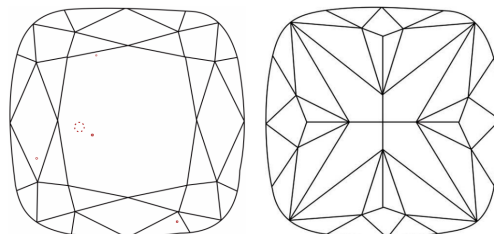
LABORATORY GROWN DIAMOND REPORT

LG628489396
Report verification at igi.org

PROPORTIONS



CLARITY CHARACTERISTICS



KEY TO SYMBOLS

Red symbols indicate internal characteristics.
Green symbols indicate external characteristics.

LABORATORY GROWN
DIAMOND REPORT

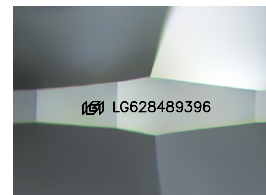
GRADING SCALES

CLARITY

IF	VVS ¹⁻²	VS ¹⁻²	SI ¹⁻²	I ¹⁻³
Internally Flawless	Very Very Slightly Included	Very Slightly Included	Slightly Included	Included

COLOR

D E F G H I J Faint Very Light Light



Sample Image Used

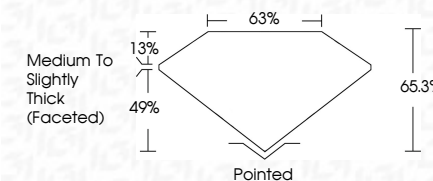


© IGI 2020, International Gemological Institute

FD - 10 20



April 5, 2024	
IGI Report Number	LG628489396
Description	LABORATORY GROWN DIAMOND
Shape and Cutting Style	SQUARE CUSHION BRILLIANT
Measurements	6.76 X 6.75 X 4.41 MM
GRADING RESULTS	
Carat Weight	1.54 CARAT
Color Grade	E
Clarity Grade	VS 1



ADDITIONAL GRADING INFORMATION

Polish	EXCELLENT
Symmetry	EXCELLENT
Fluorescence	NONE
Inscription(s)	151 LG-628489396

Comments: This Laboratory Grown Diamond was created by Chemical Vapor Deposition (CVD) growth process and may include post-growth treatment.
Type IIa

April 5, 2024	GI Report No LG20240396	
SQ	Square	
GI	Brilliant	
Color	Color Grade	1.54 CARAT
Weight	Carat Weight	
4.75 X 4.75 X 4.41 MM		
Clarity	Clarity Grade	VS 1
Depth	Depth	65.3%
Table	Table	63%
Grade	Grade	Medium to slightly Thick (Faceted)
Culet	Culet	Pointed
Polish	Polish	EXCELLENT
Symmetry	Symmetry	EXCELLENT
Fluorescence	Fluorescence	NONE
Comments	Comments	see Comments

Comments:
This Laboratory Grown Diamond was created by Chemical Vapor Deposition (CVD) growth process and may include post-growth treatment.