

**ELECTRONIC COPY**

## LABORATORY GROWN DIAMOND REPORT

|                         |                             |
|-------------------------|-----------------------------|
| February 15, 2024       |                             |
| IGI Report Number       | LG618435796                 |
| Description             | LABORATORY GROWN<br>DIAMOND |
| Shape and Cutting Style | ROUND BRILLIANT             |
| Measurements            | 6.45 - 6.48 X 3.86 MM       |

## GRADING RESULTS

|               |            |
|---------------|------------|
| Carat Weight  | 1.00 CARAT |
| Color Grade   | G          |
| Clarity Grade | VS 1       |
| Cut Grade     | EXCELLENT  |

### ADDITIONAL GRADING INFORMATION

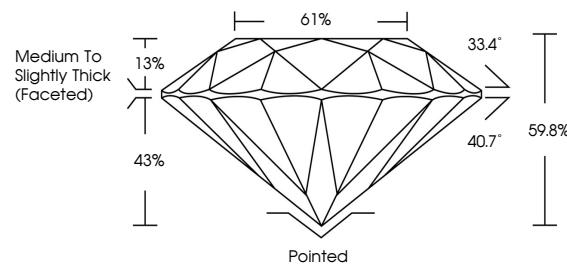
|                |                           |
|----------------|---------------------------|
| Polish         | EXCELLENT                 |
| Symmetry       | EXCELLENT                 |
| Fluorescence   | NONE                      |
| Inscription(s) | <del>15</del> LG618435796 |

Comments: This Laboratory Grown Diamond was created by Chemical Vapor Deposition (CVD) growth process and may include post-growth treatment.  
Type IIa

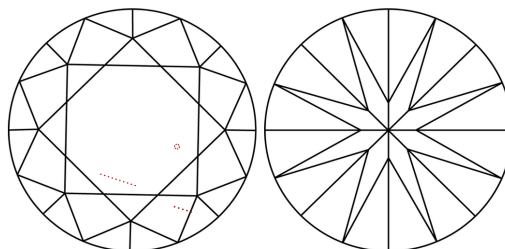
## LABORATORY GROWN DIAMOND REPORT

LG618435796  
Report verification at [igi.org](https://www.igi.org)

## PROPORTIONS



## CLARITY CHARACTERISTICS



## KEY TO SYMBOLS

Red symbols indicate internal characteristics.  
Green symbols indicate external characteristics.

LABORATORY GROWN  
DIAMOND REPORT

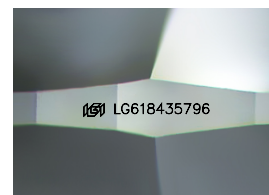
## GRADING SCALES

## CLARITY

| IF                  | VVS <sup>1-2</sup>          | VS <sup>1-2</sup>      | SI <sup>1-2</sup> | I <sup>1-3</sup> |
|---------------------|-----------------------------|------------------------|-------------------|------------------|
| Internally Flawless | Very Very Slightly Included | Very Slightly Included | Slightly Included | Included         |

**COLOR**

D E F G H I J Faint Very Light Light



Sample Image Used

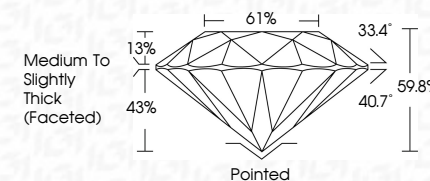


© IGI 2020, International Gemological Institute


FD - 10 20



|                         |                             |
|-------------------------|-----------------------------|
| February 15, 2024       |                             |
| IGI Report Number       | LG618435796                 |
| Description             | LABORATORY GROWN<br>DIAMOND |
| Shape and Cutting Style | ROUND BRILLIANT             |
| Measurements            | 6.45 - 6.48 X 3.86 MM       |
| <b>GRADING RESULTS</b>  |                             |
| Carat Weight            | 1.00 CARAT                  |
| Color Grade             | G                           |
| Clarity Grade           | VS 1                        |
| Cut Grade               | EXCELLENT                   |



### ADDITIONAL GRADING INFORMATION

|   |   |
|---|---|
| Polish  | EXCELLENT   |
| Symmetry  | EXCELLENT   |
| Fluorescence  | NONE  |
| Inscription(s)  |  LG618435796 |
| <p>Comments: This Laboratory Grown Diamond was created by Chemical Vapor Deposition (CVD) growth process and may include post-growth treatment.</p> <p>Type IIa</p> |   |

February 15, 2024  
GI Report No LG618435796  
ROUND BRILLIANT

|                       |            |   |      |           |       |     |                                    |           |
|-----------------------|------------|---|------|-----------|-------|-----|------------------------------------|-----------|
| 4.45 - 6.48 X 3.85 MM | 1.00 CARAT | G | VS 1 | EXCELLENT | 69.6% | 61% | Medium To Slightly Thick (Faceted) | Pointed   |
| Carat                 |            |   |      |           |       |     |                                    | EXCELLENT |
| Color Grade           |            |   |      |           |       |     |                                    | EXCELLENT |
| Clarity Grade         |            |   |      |           |       |     |                                    | NONE      |
| Depth                 |            |   |      |           |       |     |                                    |           |
| Table                 |            |   |      |           |       |     |                                    |           |
| Girdle                |            |   |      |           |       |     |                                    |           |
| Culet                 |            |   |      |           |       |     |                                    |           |
| Polish                |            |   |      |           |       |     |                                    |           |
| Symmetry              |            |   |      |           |       |     |                                    |           |
| Fluorescence          |            |   |      |           |       |     |                                    |           |

**Comments:**  
This Laboratory Grown Diamond was created by Chemical Vapor Deposition (CVD) growth process and may include post-growth treatment.