



ELECTRONIC COPY

LABORATORY GROWN DIAMOND REPORT

April 16, 2024	
IGI Report Number	LG630454431
Description	LABORATORY GROWN DIAMOND
Shape and Cutting Style	ROUND BRILLIANT
Measurements	8.04 - 8.08 X 4.99 MM
GRADING RESULTS	
Carat Weight	2.00 CARATS
Color Grade	F
Clarity Grade	VS 1
Cut Grade	IDEAL

ADDITIONAL GRADING INFORMATION

Polish	EXCELLENT
Symmetry	EXCELLENT
Fluorescence	NONE
Inscription(s)	15 LG630454431

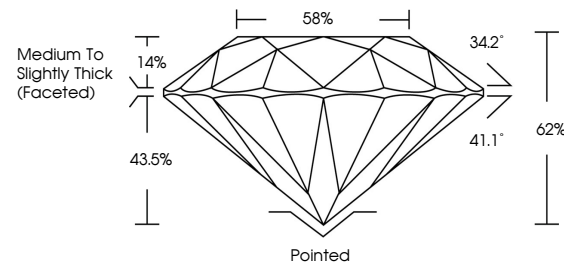
Comments: This Laboratory Grown Diamond was created by Chemical Vapor Deposition (CVD) growth process and may include post-growth treatment.
Type IIa

LABORATORY GROWN DIAMOND REPORT

LG630454431

Report verification at igi.org

PROPORTIONS



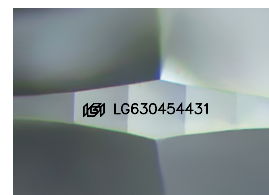
GRADING SCALES

CLARITY

IF	VVS ¹⁻²	VS ¹⁻²	SI ¹⁻²	I ¹⁻³
Internally Flawless	Very Very Slightly Included	Very Slightly Included	Slightly Included	Included

COLOR

D E F G H I J Faint Very Light Light



Sample Image Used



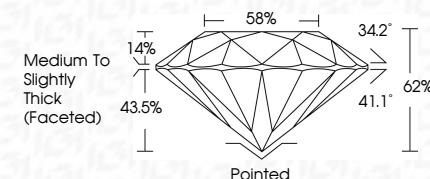
© IGI 2020, International Gemological Institute

FD - 10 20

www.igi.org

LABORATORY GROWN DIAMOND REPORT

April 16, 2024	
IGI Report Number	LG630454431
Description	LABORATORY GROWN DIAMOND
Shape and Cutting Style	ROUND BRILLIANT
Measurements	8.04 - 8.08 X 4.99 MM
GRADING RESULTS	
Carat Weight	2.00 CARATS
Color Grade	F
Clarity Grade	VS 1
Cut Grade	IDEAL



ADDITIONAL GRADING INFORMATION

Polish	EXCELLENT
Symmetry	EXCELLENT
Fluorescence	NONE
Inscription(s)	 LG630454431

Comments: This Laboratory Grown Diamond was created by Chemical Vapor Deposition (CVD) growth process and may include post-growth treatment.
Type IIa



April 16, 2024
GI Report No LG630454431
ROUND BRILLIANT

8.04 - 8.08 X 4.99 MM

3.04 - 6.00 X 4.77 MIMI	2.00 CARATS
Carat Weight	

Color Grade

Clarity Grade	VS 1	IDEAL
Cut Grade		

Cut Grade	IDEAL
Depth	62%

Table
56%

Girdle

	Pointed	Culet
11 mm x 6 mm		

Polish	EXCELLENT
Current	Polished

Symmetry	EXCELLENT
Ellipticity	NONE

Fluorescence	None
Inscription(s)	1871 LG630454431

Comments:

Comments:
This Laboratory Grown Diamond was created by Chemical Vapor Deposition

created by Chemical Vapor Deposition (CVD) growth process and may include post-growth treatment.

post-growth treatment,
type IIa