



ELECTRONIC COPY

LABORATORY GROWN DIAMOND REPORT

| | |
|-------------------------|-----------------------------|
| April 16, 2024 | |
| IGI Report Number | LG630440861 |
| Description | LABORATORY GROWN DIAMOND |
| Shape and Cutting Style | ROUND BRILLIANT |
| Measurements | 8.64 - 8.73 X 5.34 MM |
| GRADING RESULTS | |
| Carat Weight | 2.50 CARATS |
| Color Grade | F |
| Clarity Grade | VVS 2 |
| Cut Grade | IDEAL |

ADDITIONAL GRADING INFORMATION

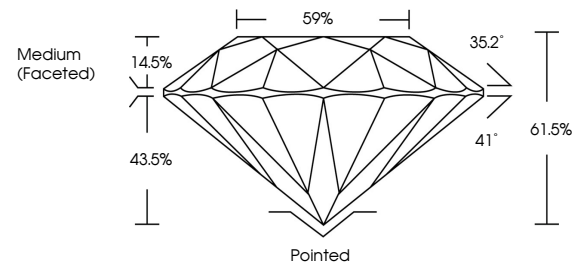
| | |
|----------------|---|
| Polish | EXCELLENT |
| Symmetry | EXCELLENT |
| Fluorescence | NONE |
| Inscription(s) |  LG630440861 |

Comments: This Laboratory Grown Diamond was created by Chemical Vapor Deposition (CVD) growth process and may include post-growth treatment.
Type IIa

LABORATORY GROWN DIAMOND REPORT

LG630440861
Report verification at igi.org

PROPORTIONS



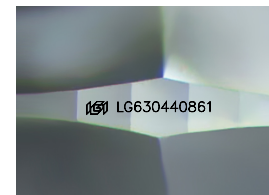
GRADING SCALES

CLARITY

| IF | VVS ¹⁻² | VS ¹⁻² | SI ¹⁻² | I ¹⁻³ |
|---------------------|-----------------------------|------------------------|-------------------|------------------|
| Internally Flawless | Very Very Slightly Included | Very Slightly Included | Slightly Included | Included |

COLOR

D E F G H I J Faint Very Light Light



Sample Image Used



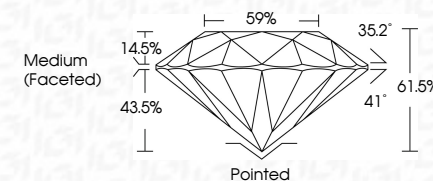
© IGI 2020, International Gemological Institute

FD - 10 20



LABORATORY GROWN DIAMOND REPORT

| | |
|-------------------------|-----------------------------|
| April 16, 2024 | |
| IGI Report Number | LG630440861 |
| Description | LABORATORY GROWN DIAMOND |
| Shape and Cutting Style | ROUND BRILLIANT |
| Measurements | 8.64 - 8.73 X 5.34 MM |
| GRADING RESULTS | |
| Carat Weight | 2.50 CARATS |
| Color Grade | F |
| Clarity Grade | VVS 2 |
| Cut Grade | IDEAL |



ADDITIONAL GRADING INFORMATION

| | |
|----------------|------------------|
| Polish | EXCELLENT |
| Symmetry | EXCELLENT |
| Fluorescence | NONE |
| Inscription(s) | 151 LG-630440861 |

Comments: This Laboratory Grown Diamond was created by Chemical Vapor Deposition (CVD) growth process and may include post-growth treatment.
Type IIa

April 16, 2024
GI Report No LG630440861
ROUND BRILLIANT

ROUND BRILLIANT
3.64 - 8.73 X 5.34 MM

| 3.64 - 8.73 X 5.34 MM | 2.50 CARATS | F |
|-----------------------|-------------|---|
| Carat Weight | | |
| Color Grade | | |

| Color Grade | F |
|---------------|-----|
| Clarity Grade | WS2 |

| | WS 2 | IDEAL |
|---------------|------|-------|
| Clarity Grade | | |
| Cut Grade | | |

| | |
|-------|-------|
| Depth | 61.5% |
| Table | 59% |

| | |
|--------|------------------|
| Table | 59% |
| Girdle | Medium (Faceted) |

[illegible]

| | |
|--------|-----------|
| Culet | Pointed |
| Polish | EXCELLENT |

| | |
|--------------|-----------|
| Symmetry | EXCELLENT |
| Fluorescence | NONE |

| | |
|----------------|-----------------|
| Fluorescence | NONE |
| Inscription(s) | 151 LG630440861 |

Comments:

This Laboratory Grown Diamond was created by Chemical Vapor Deposition

(CVD) growth process and may include post-growth treatment.

Type IIa