

**ELECTRONIC COPY**

## LABORATORY GROWN DIAMOND REPORT

February 17, 2024	
IGI Report Number	LG618435581
Description	LABORATORY GROWN DIAMOND
Shape and Cutting Style	ROUND BRILLIANT
Measurements	7.29 - 7.36 X 4.42 MM

## GRADING RESULTS

Carat Weight	1.50 CARAT
Color Grade	G
Clarity Grade	VS 1
Cut Grade	EXCELLENT

### ADDITIONAL GRADING INFORMATION

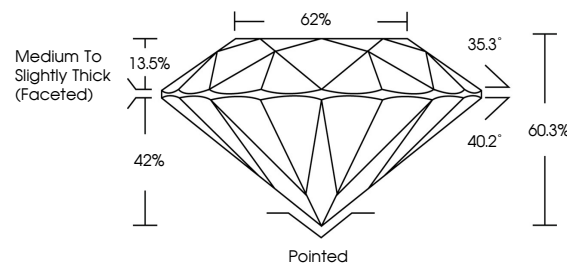
Polish	EXCELLENT
Symmetry	EXCELLENT
Fluorescence	NONE
Inscription(s)	 LG618435581

Comments: This Laboratory Grown Diamond was created by Chemical Vapor Deposition (CVD) growth process and may include post-growth treatment.  
Type IIa

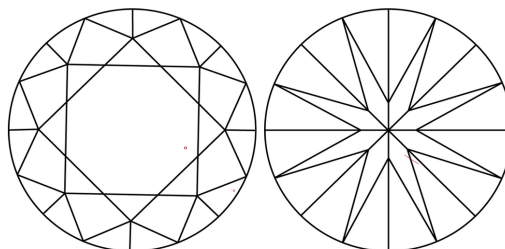
## LABORATORY GROWN DIAMOND REPORT

LG618435581  
Report verification at [igi.org](https://igi.org)

## PROPORTIONS



## CLARITY CHARACTERISTICS



### KEY TO SYMBOLS

Red symbols indicate internal characteristics.  
Green symbols indicate external characteristics.

LABORATORY GROWN  
DIAMOND REPORT

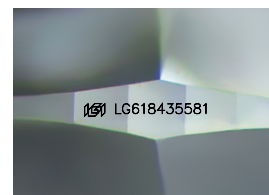
## GRADING SCALES

## CLARITY

IF	VVS <sup>1-2</sup>	VS <sup>1-2</sup>	SI <sup>1-2</sup>	I <sup>1-3</sup>
Internally Flawless	Very Very Slightly Included	Very Slightly Included	Slightly Included	Included

**COLOR**

D E F G H I J Faint Very Light Light



Sample Image Used



© IGI 2020, International Gemological Institute

FD - 10 20



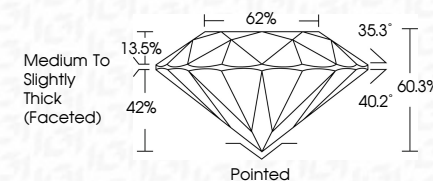
THIS DOCUMENT WAS PRODUCED WITH THE FOLLOWING SECURITY MEASURES: SPECIAL DOCUMENT PAPER, INK SCREENS, WATERMARK, BACKGROUND DESIGNS, HOLOGRAM AND OTHER SECURITY FEATURES NOT LISTED AND DO EXCEED DOCUMENT SECURITY INDUSTRY GUIDELINE

## LABORATORY GROWN DIAMOND REPORT

February 17, 2024	
IGI Report Number	LG618435581
Description	LABORATORY GROWN DIAMOND
Shape and Cutting Style	ROUND BRILLIANT
Measurements	7.29 - 7.36 X 4.42 MM

## GRADING RESULTS

Carat Weight	1.50 CARAT
Color Grade	G
Clarity Grade	VS 1
Cut Grade	EXCELLENT



### ADDITIONAL GRADING INFORMATION

Polish	EXCELLENT
Symmetry	EXCELLENT
Fluorescence	NONE
Inscription(s)	103 LG 618435581

Comments: This Laboratory Grown Diamond was created by Chemical Vapor Deposition (CVD) growth process and may include post-growth treatment.  
Type IIa



<b>Date:</b>	February 17, 2024
<b>ID Report No. [L6]1845591</b>	
<b>ROUND BRILLANT</b>	
<b>Weight:</b>	1.50 CARAT
<b>Color:</b>	G
<b>Clarity:</b>	VSI 1
<b>Cut:</b>	EXCELLENT
<b>Depth:</b>	60.3%
<b>Table:</b>	62%
<b>Girdle:</b>	Medium to Slightly Thick (Faceted)
<b>Fluorescence:</b>	Poited
<b>Symmetry:</b>	EXCELLENT
<b>Inscriptions(s):</b>	NONE
<b>Laser Inscription:</b>	#61 L6#1845591

**Comments:**  
This is a Fancy Green Diamond was treated by Chemical Vapor Deposition (CVD) growth process and may include post-growth treatment.  
**Type IIA**