

**ELECTRONIC COPY**

## LABORATORY GROWN DIAMOND REPORT

|                         |                             |
|-------------------------|-----------------------------|
| March 13, 2024          |                             |
| IGI Report Number       | LG621428138                 |
| Description             | LABORATORY GROWN<br>DIAMOND |
| Shape and Cutting Style | ROUND BRILLIANT             |
| Measurements            | 7.65 - 7.69 X 4.62 MM       |

## GRADING RESULTS

|               |            |
|---------------|------------|
| Carat Weight  | 1.67 CARAT |
| Color Grade   | G          |
| Clarity Grade | VS 1       |
| Cut Grade     | IDEAL      |

### ADDITIONAL GRADING INFORMATION

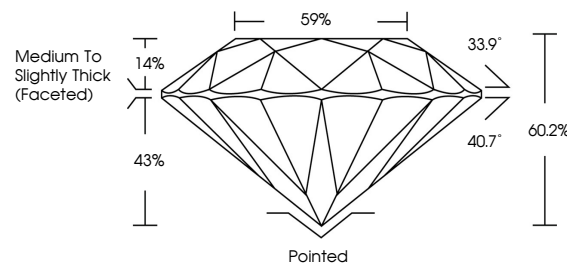
|                |                 |
|----------------|-----------------|
| Polish         | EXCELLENT       |
| Symmetry       | EXCELLENT       |
| Fluorescence   | NONE            |
| Inscription(s) | 151 LG621428138 |

Comments: This Laboratory Grown Diamond was created by Chemical Vapor Deposition (CVD) growth process and may include post-growth treatment.  
Type IIa

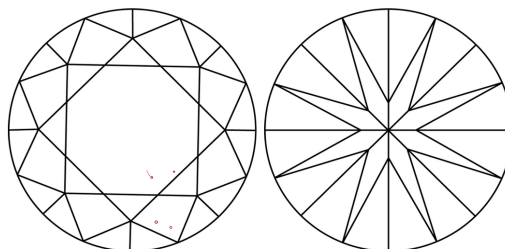
## LABORATORY GROWN DIAMOND REPORT

LG621428138  
Report verification at [igi.org](https://igi.org)

## PROPORTIONS



## CLARITY CHARACTERISTICS



## KEY TO SYMBOLS

Red symbols indicate internal characteristics.  
Green symbols indicate external characteristics.

LABORATORY GROWN  
DIAMOND REPORT

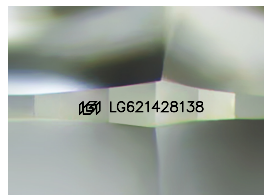
## GRADING SCALES

## CLARITY

| IF                  | VVS <sup>1-2</sup>          | VS <sup>1-2</sup>      | SI <sup>1-2</sup> | I <sup>1-3</sup> |
|---------------------|-----------------------------|------------------------|-------------------|------------------|
| Internally Flawless | Very Very Slightly Included | Very Slightly Included | Slightly Included | Included         |

**COLOR**

D E F G H I J Faint Very Light Light



Sample Image Used



© IGI 2020, International Gemological Institute

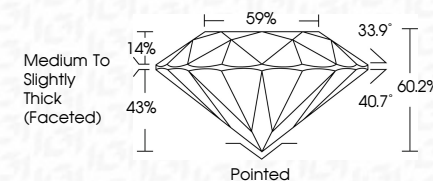
FD - 10 20

## LABORATORY GROWN DIAMOND REPORT

|                         |                             |
|-------------------------|-----------------------------|
| March 13, 2024          |                             |
| IGI Report Number       | LG621428138                 |
| Description             | LABORATORY GROWN<br>DIAMOND |
| Shape and Cutting Style | ROUND BRILLIANT             |
| Measurements            | 7.65 - 7.69 X 4.62 MM       |

## GRADING RESULTS

|               |            |
|---------------|------------|
| Carat Weight  | 1.67 CARAT |
| Color Grade   | G          |
| Clarity Grade | VS 1       |
| Cut Grade     | IDEAL      |



### ADDITIONAL GRADING INFORMATION

|                |  |
|----------------|--|
| Polish         | EXCELLENT  |
| Symmetry       | EXCELLENT  |
| Fluorescence   | NONE   |
| Inscription(s) |  LG-621428138 |

Comments: This Laboratory Grown Diamond was created by Chemical Vapor Deposition (CVD) growth process and may include post-growth treatment.  
Type IIa



|  |                                  |                           |
|--|----------------------------------|---------------------------|
|  | March 13, 2024                   | G Report No G629 1228 138 |
| <b>ROUND BRILLIANT</b>   |                                  |                           |
| <b>7.65 - 7.69 x 4.02 MM</b>   | <b>1.67 CARAT</b>                |                           |
| Carat Weight   | VSI 1                            |                           |
| Color Grade  | IDEA1                            |                           |
| Cut Grade  | 60.2%                            |                           |
| Depth  | 59%                              |                           |
| Table  | Medium To Slightly Thick Faceted |                           |
| Girdle   | Poished                          |                           |
|  | EXCELLENT                        |                           |
| Symmetry   | EXCELLENT                        |                           |
| Fluorescence   | NONE                             |                           |
| Inscriptions(s)  | #69 LG221428138                  |                           |
| Comments:  |                                  |                           |
| This Very Green Diamond was treated by Chemical Vapor Deposition (CVD) growth process and may include post-growth treatment. |                                  |                           |
| Type IIA   |                                  |                           |

**Comments:**  
This Laboratory Grown Diamond was created by Chemical Vapor Deposition (CVD) growth process and may include post-growth treatment.