



ELECTRONIC COPY

LABORATORY GROWN DIAMOND REPORT

March 19, 2024	
IGI Report Number	LG623431336
Description	LABORATORY GROWN DIAMOND
Shape and Cutting Style	ROUND BRILLIANT
Measurements	7.30 - 7.35 X 4.55 MM

GRADING RESULTS

Carat Weight	1.51 CARAT
Color Grade	G
Clarity Grade	VS 1
Cut Grade	IDEAL

ADDITIONAL GRADING INFORMATION

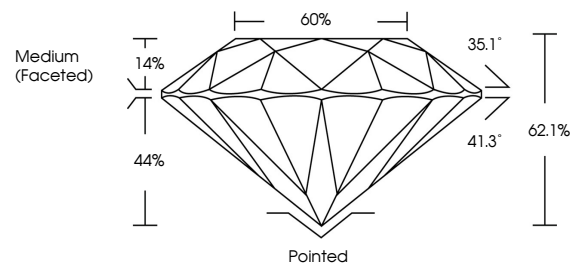
Polish	EXCELLENT
Symmetry	EXCELLENT
Fluorescence	NONE
Inscription(s)	15 LG623431336

Comments: This Laboratory Grown Diamond was created by Chemical Vapor Deposition (CVD) growth process and may include post-growth treatment.
Type IIa

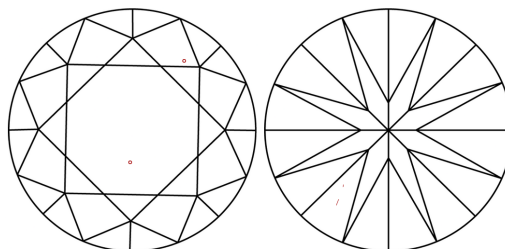
LABORATORY GROWN DIAMOND REPORT

LG623431336
Report verification at igi.org

PROPORTIONS



CLARITY CHARACTERISTICS



KEY TO SYMBOLS

Red symbols indicate internal characteristics.
Green symbols indicate external characteristics.

LABORATORY GROWN
DIAMOND REPORT

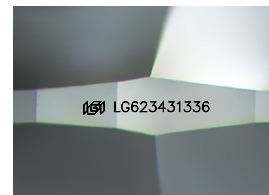
GRADING SCALES

CLARITY

IF	VVS ¹⁻²	VS ¹⁻²	SI ¹⁻²	I ¹⁻³
Internally Flawless	Very Very Slightly Included	Very Slightly Included	Slightly Included	Included

COLOR

D E F G H I J Faint Very Light Light



Sample Image Used



© IGI 2020, International Gemological Institute

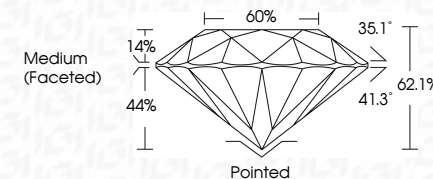
FD - 10 20

LABORATORY GROWN DIAMOND REPORT

March 19, 2024	
IGI Report Number	LG623431336
Description	LABORATORY GROWN DIAMOND
Shape and Cutting Style	ROUND BRILLIANT
Measurements	7.30 - 7.35 X 4.55 MM

GRADING RESULTS

Carat Weight	1.51 CARAT
Color Grade	G
Clarity Grade	VS 1
Cut Grade	IDEAL



ADDITIONAL GRADING INFORMATION

Polish	EXCELLENT
Symmetry	EXCELLENT
Fluorescence	NONE
Inscription(s)	 LG-623431336

Comments: This Laboratory Grown Diamond was created by Chemical Vapor Deposition (CVD) growth process and may include post-growth treatment.
Type IIa



IG

March 19, 2024	GI Report No LG230431336	
ROUND BRILLIANT		
7.30 - 7.35 x 4.55 MM	1.51 CARAT	
Corat Weight	G	
Color Grade	Vs1	
Clarity Grade	IDEAL	
Cut Grade	62.1%	
Depth	60%	
Table	Medium (Faceted)	
Girdle		
Quiet	Pointed	
Polish	EXCELLENT	
Symmetry	EXCELLENT	
Fluorescence	NONE	
Inscription(s)	169 LG230431336	
Comments:		
This is a Crown Diamond was created by Chemical Vapor Deposition (CVD) growth process and may include post-growth treatment.		
Type IIA		