

ELECTRONIC COPY

LABORATORY GROWN DIAMOND REPORT

| | |
|-------------------------|--|
| April 26, 2024 | |
| IGI Report Number | LG632493393 |
| Description | LABORATORY GROWN DIAMOND |
| Shape and Cutting Style | CUT CORNERED RECTANGULAR MODIFIED BRILLIANT |
| Measurements | 12.79 X 8.91 X 5.87 MM |

GRADING RESULTS

| | |
|---------------|-------------|
| Carat Weight | 6.05 CARATS |
| Color Grade | F |
| Clarity Grade | VS 1 |

ADDITIONAL GRADING INFORMATION

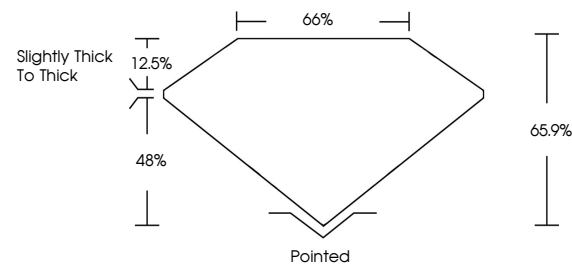
| | |
|----------------|---|
| Polish | EXCELLENT |
| Symmetry | EXCELLENT |
| Fluorescence | NONE |
| Inscription(s) |  LG632493393 |

Comments: This Laboratory Grown Diamond was created by Chemical Vapor Deposition (CVD) growth process and may include post-growth treatment.
Type IIa

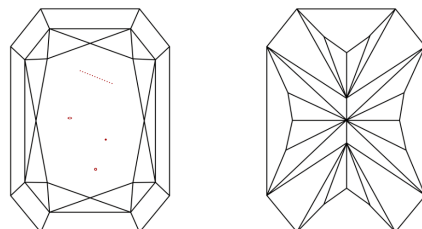
LABORATORY GROWN DIAMOND REPORT

LG632493393
Report verification at igi.org

PROPORTIONS



CLARITY CHARACTERISTICS



KEY TO SYMBOLS

Red symbols indicate internal characteristics.
Green symbols indicate external characteristics.

LABORATORY GROWN
DIAMOND REPORT

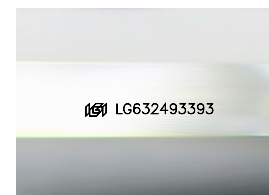
GRADING SCALES

CLARITY

| IF | VVS ¹⁻² | VS ¹⁻² | SI ¹⁻² | I ¹⁻³ |
|------------------------|--------------------------------|---------------------------|----------------------|------------------|
| Internally Flawless | Very Very Slightly Included | Very Slightly Included | Slightly Included | Included |

COLOR

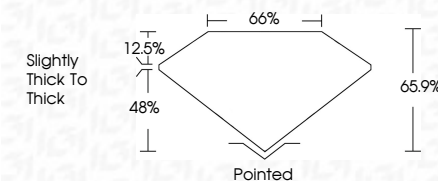
D E F G H I J Faint Very Light Light



Sample Image Used

LABORATORY GROWN DIAMOND REPORT

| | |
|-------------------------|---|
| April 26, 2024 | |
| IGI Report Number | LG632493393 |
| Description | LABORATORY GROWN DIAMOND |
| Shape and Cutting Style | CUT CORNERED RECTANGULAR MODIFIED BRILLIANT |
| Measurements | 12.79 X 8.91 X 5.87 MM |
| GRADING RESULTS | |
| Carat Weight | 6.05 CARATS |
| Color Grade | F |
| Clarity Grade | VS 1 |



ADDITIONAL GRADING INFORMATION

| | |
|---|-----------------------------|
| Polish | EXCELLENT |
| Symmetry | EXCELLENT |
| Fluorescence | NONE |
| Inscription(s) | LG63 LG632493393 |
| <p>Comments: This Laboratory Grown Diamond was created by Chemical Vapor Deposition (CVD) growth process and may include post-growth treatment.</p> <p>Type IIa</p> | |



© IGI 2020, International Gemological Institute

FD - 10 20

www.igi.org

THIS DOCUMENT WAS PRODUCED WITH THE FOLLOWING SECURITY MEASURES: SPECIAL DOCUMENT PAPER, INK SCREENS, WATERMARK, BACKGROUND DESIGNS, HOLOGRAM AND OTHER SECURITY FEATURES NOT LISTED AND DO EXCEED DOCUMENT SECURITY INDUSTRY GUIDELINES

| | | | | |
|---------------------------|---------------------------------------|-------------|-------------------------|------------------|
| April 26, 2024 | GI Report No LG502/202393 | 4.05 CARATS | VS 1 | Polished |
| GI Report No LG502/202393 | CUT CORNERED RECT, MODIFIED BRILLIANT | F | 65.9% | EXCELLENT |
| 21.72 X 9.81 X 0.67 MM | | | 65% | EXCELLENT |
| | Color Grade | | Slightly Thick To Thick | NONE |
| | Carat Weight | | | gem/GIA/20239393 |
| | Clarity Grade | | | Fluorescence |
| | Depth | | | Polish |
| | Measurable | | | Symmetry |
| | Grade | | | Fluorescence |
| | | | | Clarity |

Comments:
This Laboratory Grown Diamond was created by Chemical Vapor Deposition (CVD) growth process and may include post-growth treatment.