



ELECTRONIC COPY

LABORATORY GROWN DIAMOND REPORT

| | |
|-------------------------|-----------------------------|
| February 7, 2024 | |
| IGI Report Number | LG617458921 |
| Description | LABORATORY GROWN DIAMOND |
| Shape and Cutting Style | ROUND BRILLIANT |
| Measurements | 7.26 - 7.29 X 4.55 MM |

GRADING RESULTS

| | |
|---------------|------------|
| Carat Weight | 1.51 CARAT |
| Color Grade | E |
| Clarity Grade | VS 2 |
| Cut Grade | EXCELLENT |

ADDITIONAL GRADING INFORMATION

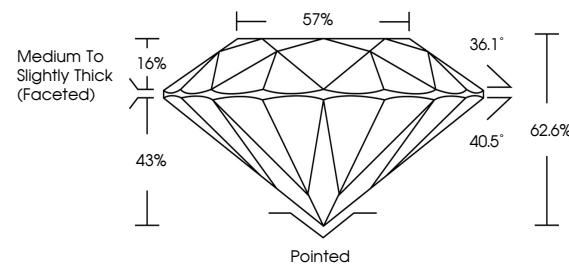
| | |
|----------------|---|
| Polish | EXCELLENT |
| Symmetry | EXCELLENT |
| Fluorescence | NONE |
| Inscription(s) |  LG617458921 |

Comments: This Laboratory Grown Diamond was created by Chemical Vapor Deposition (CVD) growth process and may include post-growth treatment.
Type IIa

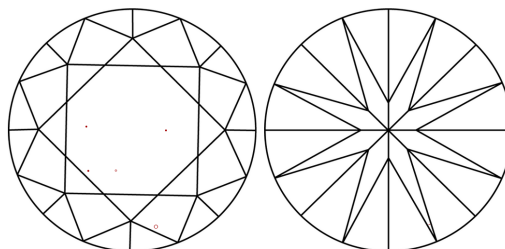
LABORATORY GROWN DIAMOND REPORT

LG617458921
Report verification at iqi.org

PROPORTIONS



CLARITY CHARACTERISTICS



KEY TO SYMBOLS

Red symbols indicate internal characteristics.
Green symbols indicate external characteristics.

LABORATORY GROWN
DIAMOND REPORT

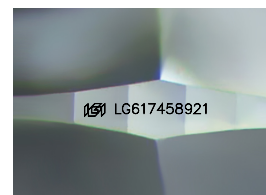
GRADING SCALES

CLARITY

| IF | VVS ¹⁻² | VS ¹⁻² | SI ¹⁻² | I ¹⁻³ |
|---------------------|-----------------------------|------------------------|-------------------|------------------|
| Internally Flawless | Very Very Slightly Included | Very Slightly Included | Slightly Included | Included |

COLOR

D E F G H I J Faint Very Light Light



Sample Image Used



© IGI 2020, International Gemological Institute

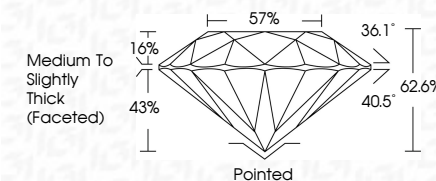
FD - 10 20

www.igi.org

LABORATORY GROWN DIAMOND REPORT

| | |
|-------------------------|-----------------------------|
| February 7, 2024 | |
| IGI Report Number | LG617458921 |
| Description | LABORATORY GROWN DIAMOND |
| Shape and Cutting Style | ROUND BRILLIANT |
| Measurements | 7.26 - 7.29 X 4.55 MM |

| GRADING RESULTS | |
|-----------------|------------|
| Carat Weight | 1.51 CARAT |
| Color Grade | E |
| Clarity Grade | VS 2 |
| Cut Grade | EXCELLENT |



ADDITIONAL GRADING INFORMATION

| | |
|----------------|------------------|
| Polish | EXCELLENT |
| Symmetry | EXCELLENT |
| Fluorescence | NONE |
| Inscription(s) | 161 LG 617458921 |

Comments: This Laboratory Grown Diamond was created by Chemical Vapor Deposition (CVD) growth process and may include post-growth treatment.
Type IIa



February 7, 2024
IGI Report No LG617458921
ROUND BRILLIANT

| | | |
|-----------------------|------------------------------------|------------|
| 7.36 - 7.29 X 4.55 MM | | 1.51 CARAT |
| Carat Weight | | |
| Color Grade | | |
| Clarity Grade | VS 2 | |
| Cut Grade | EXCELLENT | |
| Depth | 62.0% | |
| Table | 57% | |
| Girdle | Medium to Slightly Thick (faceted) | |
| Culet | Pointed | |
| Polish | EXCELLENT | |
| Symmetry | EXCELLENT | |
| Fluorescence | NONE | |
| Report# | Jewl 12517182001 | |

Comments:
This Laboratory Grown Diamond was created by Chemical Vapor Deposition (CVD) growth process and may include post-growth treatment.