



**INTERNATIONAL
GEMOLOGICAL
INSTITUTE**

ELECTRONIC COPY

LABORATORY GROWN DIAMOND REPORT

March 13, 2024	
IGI Report Number	LG626448061
Description	LABORATORY GROWN DIAMOND
Shape and Cutting Style	PEAR BRILLIANT
Measurements	10.03 X 6.23 X 4.01 MM

GRADING RESULTS

Carat Weight	1.50 CARAT
Color Grade	D
Clarity Grade	VVS 2

ADDITIONAL GRADING INFORMATION

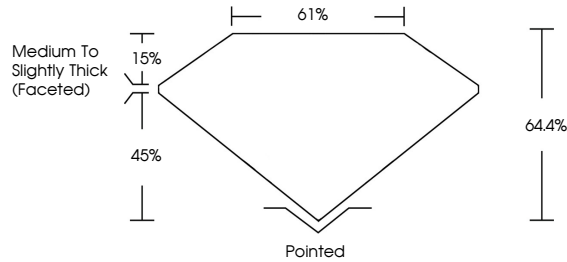
Polish	EXCELLENT
Symmetry	EXCELLENT
Fluorescence	NONE
Inscription(s)	 LG626448061

Comments: This Laboratory Grown Diamond was created by Chemical Vapor Deposition (CVD) growth process and may include post-growth treatment.
Type IIa

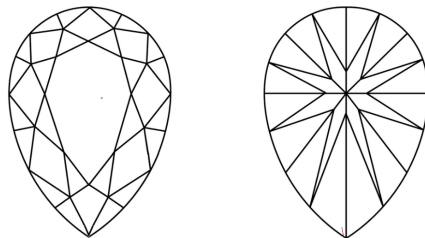
LABORATORY GROWN DIAMOND REPORT

LG626448061
Report verification at igi.org

PROPORTIONS



CLARITY CHARACTERISTICS



KEY TO SYMBOLS

Red symbols indicate internal characteristics.
Green symbols indicate external characteristics.

LABORATORY GROWN
DIAMOND REPORT

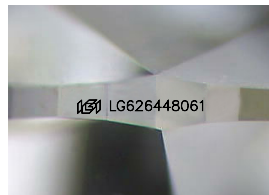
GRADING SCALES

CLARITY

IF	VVS ¹⁻²	VS ¹⁻²	SI ¹⁻²	I ¹⁻³
Internally Flawless	Very Very Slightly Included	Very Slightly Included	Slightly Included	Included

COLOR

D E F G H I J Faint Very Light Light



Sample Image Used



© IGI 2020, International Gemological Institute

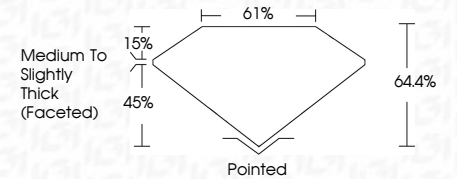
FD - 10 20

LABORATORY GROWN DIAMOND REPORT

March 13, 2024	
IGI Report Number	LG626448061
Description	LABORATORY GROWN DIAMOND
Shape and Cutting Style	PEAR BRILLIANT
Measurements	10.03 X 6.23 X 4.01 MM

GRADING RESULTS

Carat Weight	1.50 CARAT
Color Grade	D
Clarity Grade	VVS 2



ADDITIONAL GRADING INFORMATION

Polish	EXCELLENT
Symmetry	EXCELLENT
Fluorescence	NONE
Inscription(s)	151 LG626448061

Comments: This Laboratory Grown Diamond was created by Chemical Vapor Deposition (CVD) growth process and may include post-growth treatment.
Type IIa



IGI

March 13, 2024	10.03 X 6.23 X 4.01 MM	1.50 CARAT	
IGI Report No LG626448061		D	
PEAR BRILLIANT			
	Carat Weight		
	Color Grade	VVS 2	
	Clarity Grade	64.4%	
	Depth	61%	
	Table		Medium to Slightly Thick Faceted
	Girdle		
	Culet	Pointed	
	Polish	EXCELLENT	
	Symmetry	EXCELLENT	
	Fluorescence	NONE	
	Inscriptions	6991 LG626448061	
Comments:	This Laboratory Grown Diamond was created by Chemical Vapor Deposition (CVD) growth process and may include post-growth treatment.		
	Type Ia		