



ELECTRONIC COPY

LABORATORY GROWN DIAMOND REPORT

April 5, 2024	
IGI Report Number	LG628489392
Description	LABORATORY GROWN DIAMOND
Shape and Cutting Style	ROUND BRILLIANT
Measurements	7.35 - 7.40 X 4.50 MM

GRADING RESULTS

Carat Weight	1.50 CARAT
Color Grade	E
Clarity Grade	VS 1
Cut Grade	IDEAL

ADDITIONAL GRADING INFORMATION

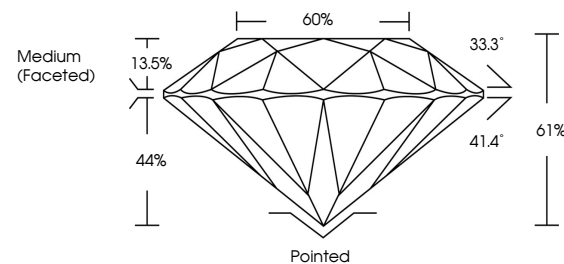
Polish	EXCELLENT
Symmetry	EXCELLENT
Fluorescence	NONE
Inscription(s)	 LG628489392

Comments: This Laboratory Grown Diamond was created by Chemical Vapor Deposition (CVD) growth process and may include post-growth treatment.
Type IIa

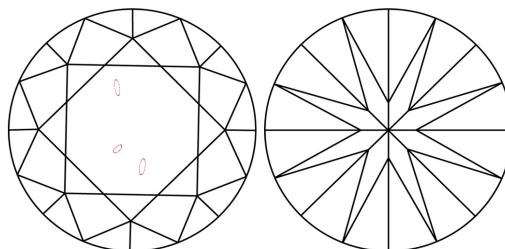
LABORATORY GROWN DIAMOND REPORT

LG628489392
Report verification at [igi.org](https://www.igi.org)

PROPORTIONS



CLARITY CHARACTERISTICS



KEY TO SYMBOLS

Red symbols indicate internal characteristics.
Green symbols indicate external characteristics.

LABORATORY GROWN
DIAMOND REPORT

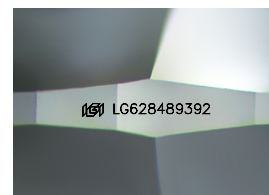
GRADING SCALES

CLARITY

IF	VVS ¹⁻²	VS ¹⁻²	SI ¹⁻²	I ¹⁻³
Internally Flawless	Very Very Slightly Included	Very Slightly Included	Slightly Included	Included

COLOR

D E F G H I J Faint Very Light Light



Sample Image Used



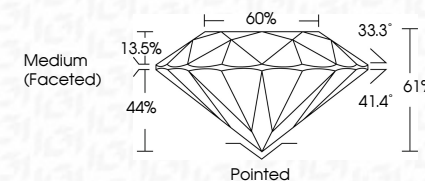
© IGI 2020, International Gemological Institute

FD - 10 20

www.igi.org

LABORATORY GROWN DIAMOND REPORT

April 5, 2024	
IGI Report Number	LG628489392
Description	LABORATORY GROWN DIAMOND
Shape and Cutting Style	ROUND BRILLIANT
Measurements	7.35 - 7.40 X 4.50 MM
GRADING RESULTS	
Carat Weight	1.50 CARAT
Color Grade	E
Clarity Grade	VS 1
Cut Grade	IDEAL



ADDITIONAL GRADING INFORMATION

Polish	EXCELLENT
Symmetry	EXCELLENT
Fluorescence	NONE
Inscription(s)	1631 LG628489392
<p>Comments: This Laboratory Grown Diamond was created by Chemical Vapor Deposition (CVD) growth process and may include post-growth treatment.</p> <p>Type IIa</p>	



April 5, 2024	Carat Weight	1.50 CARAT
GI Report No. LG2846992	Color Grade	E
ROUND BRILLIANT	Clarity Grade	VS 1
	Cut Grade	IDEAL
	Depth	61%
	Table	60%
	Grille	Medium (Faceted)
	Cluett	Painted
	Polish	EXCELLENT
	Symmetry	EXCELLENT
	Fluorescence	NONE
	Inscriptions(s)	69 LG2846992
Comments:	<p>The Laboratory Grown Diamond was created by Chemical Vapor Deposition and may include post-growth treatment.</p> <p>Type Iia</p>	