



ELECTRONIC COPY

LABORATORY GROWN DIAMOND REPORT

September 2, 2023	
IGI Report Number	LG598335191
Description	LABORATORY GROWN DIAMOND
Shape and Cutting Style	ROUND BRILLIANT
Measurements	7.31 - 7.36 X 4.54 MM

GRADING RESULTS

Carat Weight	1.51 CARAT
Color Grade	D
Clarity Grade	VS 1
Cut Grade	IDEAL

ADDITIONAL GRADING INFORMATION

Polish	EXCELLENT
Symmetry	EXCELLENT
Fluorescence	NONE
Inscription(s)	 LG598335191

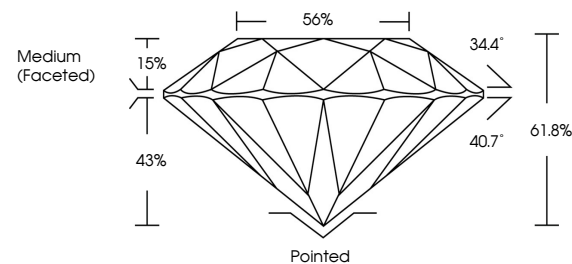
Comments: As Grown - No indication of post-growth treatment.
This Laboratory Grown Diamond was created by High Pressure High Temperature (HPHT) growth process.
Type II

LABORATORY GROWN DIAMOND REPORT

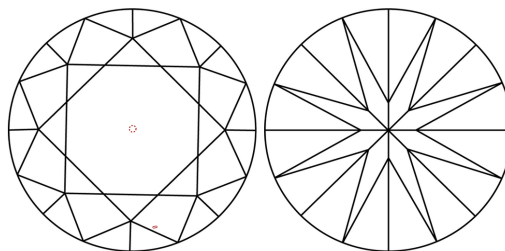
LG598335191

Report verification at igi.org

PROPORTIONS



CLARITY CHARACTERISTICS



KEY TO SYMBOLS

Red symbols indicate internal characteristics.
Green symbols indicate external characteristics.

LABORATORY GROWN
DIAMOND REPORT

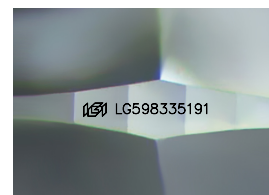
GRADING SCALES

CLARITY

IF	VVS ¹⁻²	VS ¹⁻²	SI ¹⁻²	I ¹⁻³
Internally Flawless	Very Very Slightly Included	Very Slightly Included	Slightly Included	Included

COLOR

D E F G H I J Faint Very Light Light



Sample Image Used



© IGI 2020, International Gemological Institute

FD - 10 20

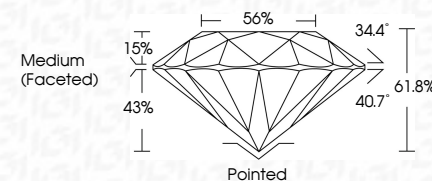
www.igi.org

LABORATORY GROWN DIAMOND REPORT

September 2, 2023	
IGI Report Number	LG598335191
Description	LABORATORY GROWN DIAMOND
Shape and Cutting Style	ROUND BRILLIANT
Measurements	7.31 - 7.36 X 4.54 MM

GRADING RESULTS

Carat Weight	1.51 CARAT
Color Grade	D
Clarity Grade	VS 1
Cut Grade	IDEAL



ADDITIONAL GRADING INFORMATION

Polish	EXCELLENT
Symmetry	EXCELLENT
Fluorescence	NONE
Inscription(s)	 LG598335191
Comments: As Grown - No indication of post-growth treatment.	
This Laboratory Grown Diamond was created by High Pressure High Temperature (HPHT) growth process.	
Type II	



September 2, 2023
IGI Report No LG5983
ROUND BRILLIANT

7.31 - 7.36 X 4.64 MM	1.51 CARAT	D	VS 1	IDEAL	61.0%	56%	Medium (faceted)	Pointed	EXCELLENT	EXCELLENT	NON E	NON E
	Color Grade	Clarity Grade	Cut Grade	Depth	Table	Grade		Culet	Polish	Symmetry	Fluorescence	

Comments:
As Grown - No indication of post-growth treatment.
This Laboratory Grown Diamond was created by High Pressure High Temperature (HPHT) growth process.