



**ELECTRONIC COPY**

## LABORATORY GROWN DIAMOND REPORT

October 11, 2023	
IGI Report Number	LG603341009
Description	LABORATORY GROWN DIAMOND
Shape and Cutting Style	CUT CORNERED RECTANGULAR MODIFIED BRILLIANT
Measurements	14.43 X 11.38 X 7.71 MM

## GRADING RESULTS

Carat Weight	10.88 CARATS
Color Grade	H
Clarity Grade	VS 1

### ADDITIONAL GRADING INFORMATION

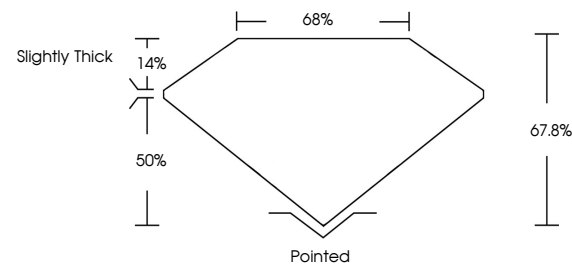
Polish	EXCELLENT
Symmetry	EXCELLENT
Fluorescence	NONE
Inscription(s)	 LG603341009

Comments: This Laboratory Grown Diamond was created by Chemical Vapor Deposition (CVD) growth process and may include post-growth treatment.  
Type IIa

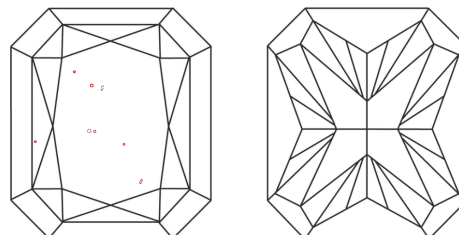
## LABORATORY GROWN DIAMOND REPORT

LG603341009  
Report verification at [igi.org](http://igi.org)

## PROPORTIONS



## CLARITY CHARACTERISTICS



## KEY TO SYMBOLS

Red symbols indicate internal characteristics.  
Green symbols indicate external characteristics.

LABORATORY GROWN  
DIAMOND REPORT

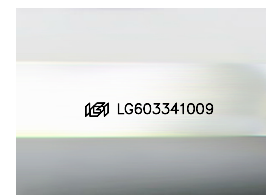
## GRADING SCALES

## CLARITY

IF	VVS <sup>1-2</sup>	VS <sup>1-2</sup>	SI <sup>1-2</sup>	I <sup>1-3</sup>
Internally Flawless	Very Very Slightly Included	Very Slightly Included	Slightly Included	Included

**COLOR**

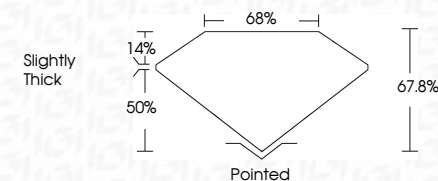
D E F G H I J Faint Very Light Light



Sample Image Used



October 11, 2023	
IGI Report Number	LG603341009
Description	LABORATORY GROWN DIAMOND
Shape and Cutting Style	CUT CORNERED RECTANGULAR MODIFIED BRILLIANT
Measurements	14.43 X 11.38 X 7.71 MM
<b>GRADING RESULTS</b>	
Carat Weight	10.88 CARATS
Color Grade	H
Clarity Grade	VS 1



### ADDITIONAL GRADING INFORMATION

Polish	EXCELLENT
Symmetry	EXCELLENT
Fluorescence	NONE
Inscription(s)	(15) LG603341009

Comments: This Laboratory Grown Diamond was created by Chemical Vapor Deposition (CVD) growth process and may include post-growth treatment.  
Type IIa



© IGI 2020, International Gemological Institute

FD - 10 20

**www.igi.org**

THIS DOCUMENT WAS PRODUCED WITH THE FOLLOWING SECURITY MEASURES: SPECIAL DOCUMENT PAPER, INK SCREENS, WATERMARK, BACKGROUND DESIGNS, HOLOGRAM AND OTHER SECURITY FEATURES NOT LISTED AND DO EXCEED DOCUMENT SECURITY INDUSTRY GUIDELINES

October 11, 2023	GI CORNER NO LG403341009	1048 CABATS	H	VS 1	Pointed	
GI CORNER NO LG403341009	GI CORNER RECT. MODIFIED BRILLIANT			67.8%	EXCELLENT	
				68%	EXCELLENT	NONE
						68 LG403341009
14.43 X 11.38 X 7.71 MM						
Carat Weight						
Color Grade						
Clarity Grade						
Depth						
Table						
Girdle						
Culet						
Polish						
Symmetry						
Fluorescence						
Inscriptions(s)						

Comments:

Created by: Cheryl Diamond was treated by Group Vapor Deposition CVD growth process and may include post-growth treatment.

Type IIG