



ELECTRONIC COPY

LABORATORY GROWN DIAMOND REPORT

LG566311951

Report verification at igi.org

LABORATORY GROWN
DIAMOND REPORT

LABORATORY GROWN DIAMOND REPORT

LABORATORY GROWN DIAMOND REPORT

January 25, 2023
IGI Report Number **LG566311951**
Description **LABORATORY GROWN
DIAMOND**
Shape and Cutting Style **CUSHION BRILLIANT**
Measurements **7.07 X 6.09 X 4.02 MM**

GRADING RESULTS

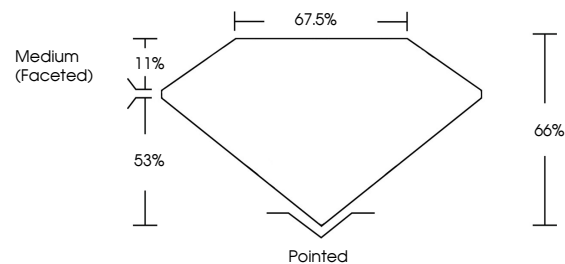
Carat Weight **1.29 CARAT**
Color Grade **G**
Clarity Grade **VS 2**
Cut Grade **VERY GOOD**

ADDITIONAL GRADING INFORMATION

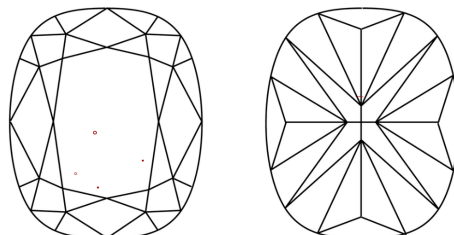
Polish **EXCELLENT**
Symmetry **EXCELLENT**
Fluorescence **NONE**
Inscription(s) **LABGROWN (L) LG566311951**

Comments: This Laboratory Grown Diamond was created by Chemical Vapor Deposition (CVD) growth process and may include post-growth treatment. Type IIa

PROPORTIONS



CLARITY CHARACTERISTICS



KEY TO SYMBOLS

Red symbols indicate internal characteristics.
Green symbols indicate external characteristics.

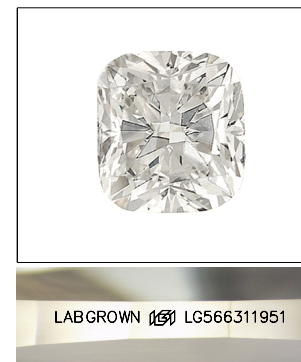
GRADING SCALES

CLARITY

IF	VVS ¹⁻²	VS ¹⁻²	SI ¹⁻²	I ¹⁻³
Internally Flawless	Very Very Slightly Included	Very Slightly Included	Slightly Included	Included

COLOR

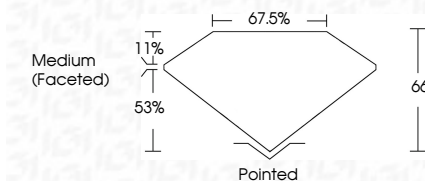
D	E	F	G	H	I	J	Faint	Very Light	Light
---	---	---	---	---	---	---	-------	------------	-------



LASERSCRIBESM

Sample Image Used

January 25, 2023
IGI Report Number **LG566311951**
Description **LABORATORY GROWN
DIAMOND**
Shape and Cutting Style **CUSHION BRILLIANT**
Measurements **7.07 X 6.09 X 4.02 MM**
GRADING RESULTS
Carat Weight **1.29 CARAT**
Color Grade **G**
Clarity Grade **VS 2**
Cut Grade **VERY GOOD**



ADDITIONAL GRADING INFORMATION

Polish **EXCELLENT**
Symmetry **EXCELLENT**
Fluorescence **NONE**
Inscription(s) **LABGROWN (L) LG566311951**

Comments: This Laboratory Grown Diamond was created by Chemical Vapor Deposition (CVD) growth process and may include post-growth treatment. Type IIa



IGI

January 25, 2023
IGI Report No LG566311951
CUSHION BRILLIANT
7.07 X 6.09 X 4.02 MM
Carat Weight **1.29 CARAT**
Color Grade **G**
Clarity Grade **VS 2**
Cut Grade **VERY GOOD**
Depth **66%**
Table **67.5%**
Girdle **Medium (Faceted)**
Culet **Pointed**
Polish **EXCELLENT**
Symmetry **EXCELLENT**
Fluorescence **NONE**
Inscriptions(s) **LABGROWN (L) LG566311951**

Comments: This Laboratory Grown Diamond was created by Chemical Vapor Deposition (CVD) growth process and may include post-growth treatment. Type IIa

