



## LABORATORY GROWN DIAMOND REPORT

## GRADING RESULTS

### ADDITIONAL GRADING INFORMATION

Comments: This Laboratory Grown Diamond was created by Chemical Vapor Deposition (CVD) growth process and may include post-growth treatment.  
Type IIa

LG620400929  
Report verification at lgi.org

Diagram illustrating the proportions of a faceted diamond. The proportions are defined by percentages and angles:

- Table width: 56%
- Crown width: 14%
- Crown angle: 33.1°
- Pavilion width: 42.5%
- Pavilion angle: 40.4°
- Total height: 60.4%
- Total angle: 33.1°

Red symbols indicate internal characteristics.  
Green symbols indicate external characteristics.

## GRADING SCALES

IF	VVS <sup>1-2</sup>	VS <sup>1-2</sup>	SI <sup>1-2</sup>	I <sup>1-3</sup>
Internally Flawless	Very Very Slightly Included	Very Slightly Included	Slightly Included	Included

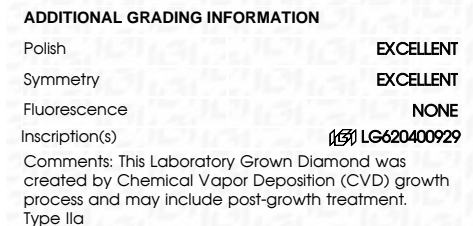
D E F G H I J Faint Very Light Light



FD - 10 20

THIS DOCUMENT WAS PRODUCED WITH THE FOLLOWING SECURITY MEASURES: SPECIAL DOCUMENT PAPER, INK SCREENS, WATERMARK, BACKGROUND DESIGNS, HOLOGRAM AND OTHER SECURITY FEATURES NOT LISTED AND DO EXCEED DOCUMENT SECURITY INDUSTRY GUIDELINES

GRADING RESULTS	
Carat Weight	1.52 CARAT
Color Grade	F
Clarity Grade	VS 1
Cut Grade	IDEAL



February 29, 2024	1.52 CARAT
GI Report No. LG20400929	F
ROUND BRILLIANT	VS 1
	IDEAL
	60.4%
	65%
	Medium Faceted
	Pointed
	EXCELLENT
	EXCELLENT
	NONE
	681 LG20400929
Comments:	
This Laboratory Grown Diamond was created by Chemical Vapor Deposition (CVD) growth process and may include post-growth treatment.	
Type IId	