

ELECTRONIC COPY

LABORATORY GROWN DIAMOND REPORT

February 21, 2024	
IGI Report Number	LG620400186
Description	LABORATORY GROWN DIAMOND
Shape and Cutting Style	ROUND BRILLIANT
Measurements	8.80 - 8.84 X 5.26 MM

GRADING RESULTS

Carat Weight	2.52 CARATS
Color Grade	G
Clarity Grade	VVS 2
Cut Grade	IDEAL

ADDITIONAL GRADING INFORMATION

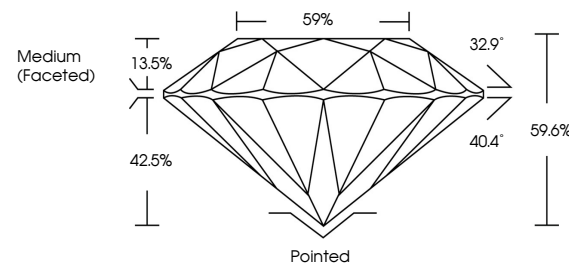
Polish	EXCELLENT
Symmetry	EXCELLENT
Fluorescence	NONE
Inscription(s)	 LG620400186

Comments: This Laboratory Grown Diamond was created by Chemical Vapor Deposition (CVD) growth process and may include post-growth treatment.
Type IIa

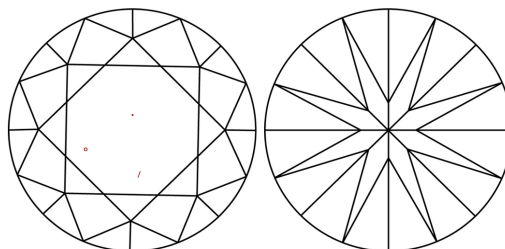
LABORATORY GROWN DIAMOND REPORT

LG620400186
Report verification at lgi.org

PROPORTIONS



CLARITY CHARACTERISTICS



KEY TO SYMBOLS

Red symbols indicate internal characteristics.
Green symbols indicate external characteristics.

LABORATORY GROWN
DIAMOND REPORT

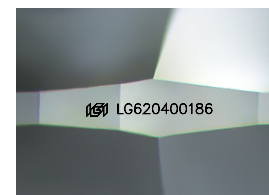
GRADING SCALES

CLARITY

IF	VVS ¹⁻²	VS ¹⁻²	SI ¹⁻²	I ¹⁻³
Internally Flawless	Very Very Slightly Included	Very Slightly Included	Slightly Included	Included

COLOR

D E F G H I J Faint Very Light Light



Sample Image Used

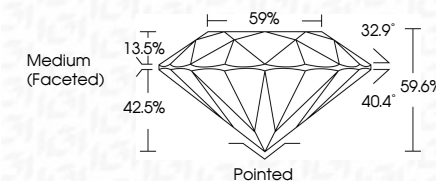


© IGI 2020, International Gemological Institute

FD - 10 20

LABORATORY GROWN DIAMOND REPORT

February 21, 2024	
IGI Report Number	LG620400186
Description	LABORATORY GROWN DIAMOND
Shape and Cutting Style	ROUND BRILLIANT
Measurements	8.80 - 8.84 X 5.26 MM
GRADING RESULTS	
Carat Weight	2.52 CARATS
Color Grade	G
Clarity Grade	VVS 2
Cut Grade	IDEAL



ADDITIONAL GRADING INFORMATION

Polish	EXCELLENT
Symmetry	EXCELLENT
Fluorescence	NONE
Inscription(s)	153 LG620400186
<p>Comments: This Laboratory Grown Diamond was created by Chemical Vapor Deposition (CVD) growth process and may include post-growth treatment.</p> <p>Type IIa</p>	



January 21, 2024
C&E Report No. LG620400186
ROUND BRILLIANT
GIA REPORT # 69-0 - 8.04 X 5.26 MM
2.62 CARATS
E
VVS 2
IDELAL
59.6%
59%
(Medium Foisted)
Patched
EXCELLENT
EXCELLENT
NONE
#G1 LG620400186
Comments:
This is a Very Good Crown Diamond was treated by Chemical Vapor Deposition (CVD) growth process and may include post-growth treatment.
Type Ila