



ELECTRONIC COPY

LABORATORY GROWN DIAMOND REPORT

March 22, 2024	
IGI Report Number	LG623431572
Description	LABORATORY GROWN DIAMOND
Shape and Cutting Style	ROUND BRILLIANT
Measurements	7.68 - 7.71 X 4.77 MM

GRADING RESULTS

Carat Weight	1.74 CARAT
Color Grade	F
Clarity Grade	VS 1
Cut Grade	IDEAL

ADDITIONAL GRADING INFORMATION

Polish	EXCELLENT
Symmetry	EXCELLENT
Fluorescence	NONE
Inscription(s)	 LG623431572

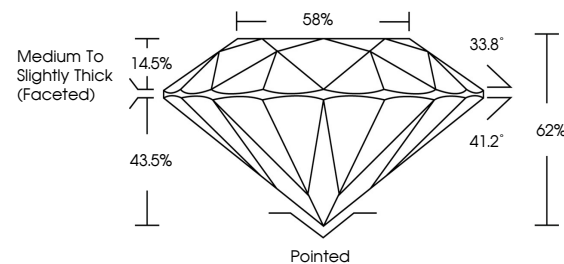
Comments: This Laboratory Grown Diamond was created by Chemical Vapor Deposition (CVD) growth process and may include post-growth treatment.
Type IIa

LABORATORY GROWN DIAMOND REPORT

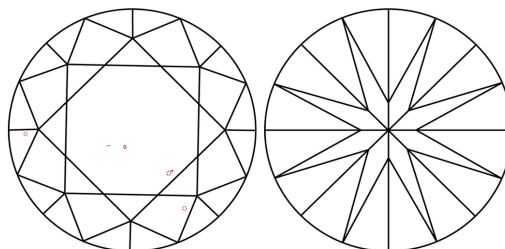
LG623431572

Report verification at igi.org

PROPORTIONS



CLARITY CHARACTERISTICS



KEY TO SYMBOLS

Red symbols indicate internal characteristics.
Green symbols indicate external characteristics.

LABORATORY GROWN
DIAMOND REPORT

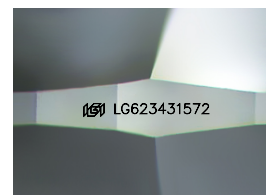
GRADING SCALES

CLARITY

IF	VVS ¹⁻²	VS ¹⁻²	SI ¹⁻²	I ¹⁻³
Internally Flawless	Very Very Slightly Included	Very Slightly Included	Slightly Included	Included

COLOR

D E F G H I J Faint Very Light Light



Sample Image Used



© IGI 2020, International Gemological Institute

FD - 10 20

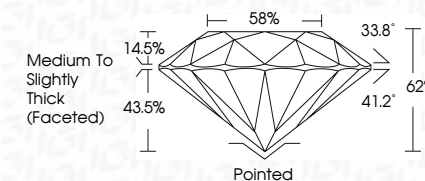
www.igi.org

LABORATORY GROWN DIAMOND REPORT

March 22, 2024	
IGI Report Number	LG623431572
Description	LABORATORY GROWN DIAMOND
Shape and Cutting Style	ROUND BRILLIANT
Measurements	7.68 - 7.71 X 4.77 MM

GRADING RESULTS

Carat Weight	1.74 CARAT
Color Grade	F
Clarity Grade	VS 1
Cut Grade	IDEAL



ADDITIONAL GRADING INFORMATION

Polish	EXCELLENT
Symmetry	EXCELLENT
Fluorescence	NONE
Inscription(s)	(15) LG623431572

Comments: This Laboratory Grown Diamond was created by Chemical Vapor Deposition (CVD) growth process and may include post-growth treatment.
Type IIa



March 22, 2024	GI Report No. LG263431572	1,7A CARAT	VS 1	IDEAL	62%	86%	Medium to Slightly Thick (Fastest)	Pointed	EXCELLENT	EXCELLENT	NONE	1691 LG263431572
ROUND BRILLIANT	1.68 - 1.71 X 4.77 MM	Color Grade	Clarity Grade	Cut Grade	Depth	Table	Girdle	Cuef	Polish	Symmetry	Fluorescence	Inscriptions(s)
		Color Weight										

Comments:
 This Natural Color Diamond was treated by Chemical Vapor Deposition (CVD) growth process and may include post-growth treatment.
 Type IIa