



ELECTRONIC COPY

LABORATORY GROWN DIAMOND REPORT

March 13, 2024	
IGI Report Number	LG621428101
Description	LABORATORY GROWN DIAMOND
Shape and Cutting Style	ROUND BRILLIANT
Measurements	8.24 - 8.26 X 5.15 MM

GRADING RESULTS

Carat Weight	2.18 CARATS
Color Grade	F
Clarity Grade	VS 1
Cut Grade	IDEAL

ADDITIONAL GRADING INFORMATION

Polish	EXCELLENT
Symmetry	EXCELLENT
Fluorescence	NONE
Inscription(s)	 LG621428101

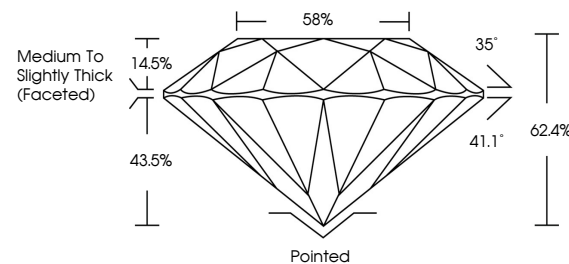
Comments: This Laboratory Grown Diamond was created by Chemical Vapor Deposition (CVD) growth process and may include post-growth treatment.
Type IIa

LABORATORY GROWN DIAMOND REPORT

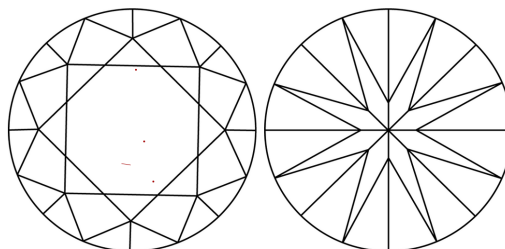
LG621428101

Report verification at igi.org

PROPORTIONS



CLARITY CHARACTERISTICS



KEY TO SYMBOLS

Red symbols indicate internal characteristics.
Green symbols indicate external characteristics.

LABORATORY GROWN
DIAMOND REPORT

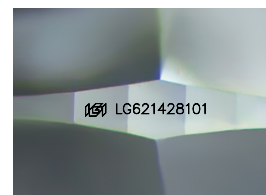
GRADING SCALES

CLARITY

IF	VVS ¹⁻²	VS ¹⁻²	SI ¹⁻²	I ¹⁻³
Internally Flawless	Very Very Slightly Included	Very Slightly Included	Slightly Included	Included

COLOR

D E F G H I J Faint Very Light Light



Sample Image Used



© IGI 2020, International Gemological Institute

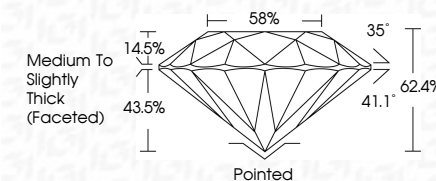
FD - 10 20

LABORATORY GROWN DIAMOND REPORT

March 13, 2024	
IGI Report Number	LG621428101
Description	LABORATORY GROWN DIAMOND
Shape and Cutting Style	ROUND BRILLIANT
Measurements	8.24 - 8.26 X 5.15 MM

GRADING RESULTS

Carat Weight	2.18 CARATS
Color Grade	F
Clarity Grade	VS 1
Cut Grade	IDEAL



ADDITIONAL GRADING INFORMATION

Polish	EXCELLENT
Symmetry	EXCELLENT
Fluorescence	NONE
Inscription(s)	151 LG-21428101

Comments: This Laboratory Grown Diamond was created by Chemical Vapor Deposition (CVD) growth process and may include post-growth treatment.
Type IIa



March 13, 2024	G1 Report No. G621428101		ROUND BRILLIANT	
2.24 - 8.26 X 5.15 MM		2.18 CARATS	F	
Color Weight	Color Grade	Clarity Grade	Vs 1	IDEAL
Depth	Table	Polish	62.4%	68%
Girdle	Medium to Slightly Thick (Faceted)	Pointed	Excellent	Excellent
Symmetry	Fluorescence	None	16915621428101	
Comments:	The Laboratory Grown Diamond was analyzed using the HPHT growth process and may include post-growth treatment.			
Type IIA				