

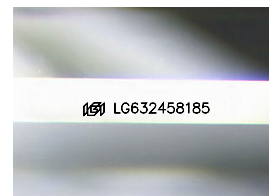
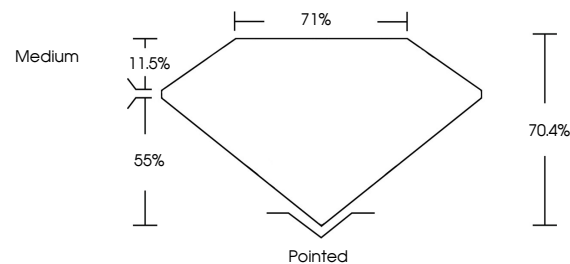


**ELECTRONIC COPY**

## LABORATORY GROWN DIAMOND REPORT

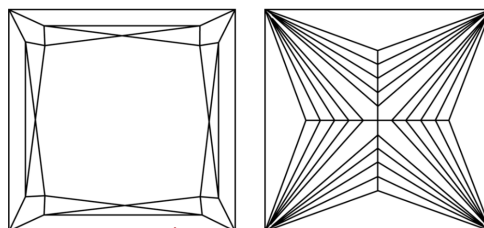
LG632458185  
Report verification at [igi.org](https://igi.org)

## PROPORTIONS



Sample Image Used

## CLARITY CHARACTERISTICS



## KEY TO SYMBOLS

Red symbols indicate internal characteristics.  
Green symbols indicate external characteristics.

## COLOR



## CLARITY



© IGI 2020, International Gemological Institute

FD - 10 20

**www.igi.org**

## DIAMOND REPORT



May 3, 2024

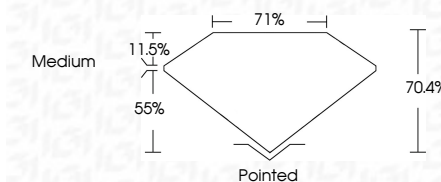
IGI Report Number **LG632458185**Description **LABORATORY GROWN DIAMOND**Shape and Cutting Style **PRINCESS CUT**

Measurements **5.55 X 5.41 X 3.81 MM**

## GRADING RESULTS

Carat Weight 1.02 CARAT

Color Grade D

Clarity Grade WS 2

### ADDITIONAL GRADING INFORMATION

Polish **EXCELLENCE**Symmetry **EXCELLENCE**Fluorescence NONInscription(s)  LG63245818

Comments: This Laboratory Grown Diamond was created by Chemical Vapor Deposition (CVD) growth process and may include post-growth treatment.  
Type IIa



May 3, 2024  
GI Report No LG632458185  
PRINCESS CUT

5.55 X 5.41 X 3.81 MM	Carat Weight	1.02 CARAT
	Color Grade	D
	Clarity Grade	VVS 2
	Depth	70.4%
	Table	71%
	Grade	Medium
	Culet	Pointed
	Polish	EXCELLENT
	Symmetry	EXCELLENT
	Fluorescence	NONE
	Measurements (mm)	5.55 X 5.41 X 3.81

**Comments:**  
This Laboratory Grown Diamond was created by Chemical Vapor Deposition (CVD) growth process and may include post-growth treatment.