

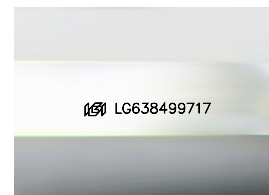
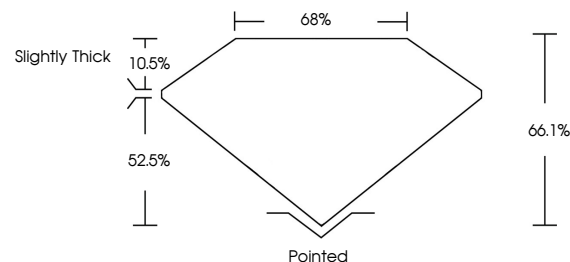


ELECTRONIC COPY

LABORATORY GROWN DIAMOND REPORT

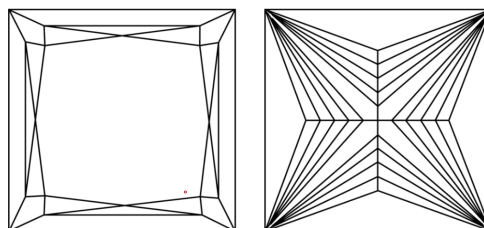
LG638499717
Report verification at lgi.org

PROPORTIONS



Sample Image Used

CLARITY CHARACTERISTICS



KEY TO SYMBOLS

Red symbols indicate internal characteristics.
Green symbols indicate external characteristics.

COLOR

D E F G H I J Faint Very Light Light

CLARITY

IF	VVS ¹⁻²	VS ¹⁻²	SI ¹⁻²	I ¹⁻³
Internally Flawless	Very Very Slightly Included	Very Slightly Included	Slightly Included	Included

LABORATORY GROWN DIAMOND REPORT



June 12, 2024

IGI Report Number **LG638499717**

Description	LABORATORY GROWN DIAMOND
-------------	--------------------------

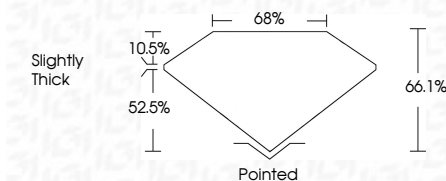
Shape and Cutting Style **PRINCESS CUT**

Measurements 6.65 X 6.49 X 4.29 MM

GRADING RESULTS

Carat Weight 1.57 CARAT

Color Grade

Clarity Grade WS 2

ADDITIONAL GRADING INFORMATION

Polish **EXCELLENT**Symmetry **EXCELLENT**Fluorescence **NONE**Inscription(s) LG638499717

Comments: This Laboratory Grown Diamond was created by Chemical Vapor Deposition (CVD) growth process.
Type IIa



© IGI 2020, International Gemological Institute

FD - 10 20



THIS DOCUMENT WAS PRODUCED WITH THE FOLLOWING SECURITY MEASURES: SPECIAL DOCUMENT PAPER, INK SCREENS, WATERMARK, BACKGROUND DESIGNS, HOLOGRAM AND OTHER SECURITY FEATURES NOT LISTED AND DO EXCEED DOCUMENT SECURITY INDUSTRY GUIDELINES

June 12, 2024
GI Report No LG638499717
PRINCESS CUT

6.65 X 6.49 X 4.29 MM	Carat Weight	1.57 CARAT
	Color Grade	D
	Clarity Grade	VVS 2
	Depth	66.1%
	Table	68%
	Grade	Slightly Thick
	Culet	Pointed
	Polish	EXCELLENT
	Symmetry	EXCELLENT
	Fluorescence	NONE
	Report Number	4561 1558 4627173

Comments:
This Laboratory Grown Diamond was created by Chemical Vapor Deposition (CVD) growth process.