

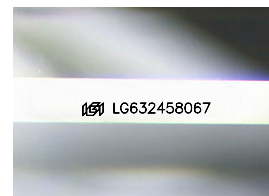
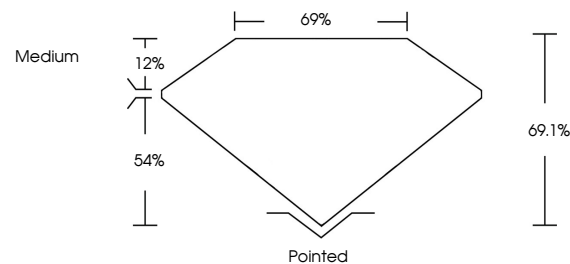


**ELECTRONIC COPY**

## LABORATORY GROWN DIAMOND REPORT

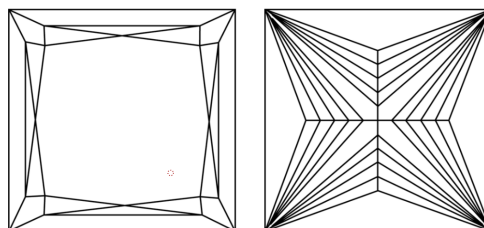
LG632458067  
Report verification at [igi.org](https://igi.org)

## PROPORTIONS



Sample Image Used

## CLARITY CHARACTERISTICS



### KEY TO SYMBOLS

Red symbols indicate internal characteristics.  
Green symbols indicate external characteristics.

## COLOR

D E F G H I J Faint Very Light Light

## CLARITY

IF	VVS <sup>1-2</sup>	VS <sup>1-2</sup>	SI <sup>1-2</sup>	I <sup>1-3</sup>
Internally Flawless	Very Very Slightly Included	Very Slightly Included	Slightly Included	Included



© IGI 2020, International Gemological Institute

FD - 10 20

**www.igi.org**

## DIAMOND REPORT



May 2, 2024

IGI Report Number **LG632458067**

Description	LABORATORY GROWN DIAMOND
-------------	--------------------------

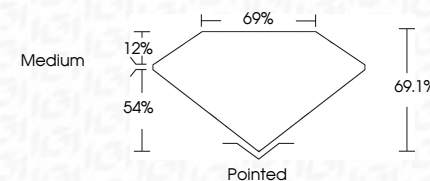
Shape and Cutting Style **PRINCESS CUT**

Measurements **7.13 X 7.12 X 4.92 MM**

## GRADING RESULTS

Carat Weight 2.09 CARATS

Color Grade	D
-------------	---

Clarity Grade VVS 2

### ADDITIONAL GRADING INFORMATION

Polish **EXCELLENT**Symmetry **EXCELLENT**Fluorescence **NONE**Inscription(s)  LG632458067

Comments: This Laboratory Grown Diamond was created by Chemical Vapor Deposition (CVD) growth process and may include post-growth treatment.  
Type IIa



May 2, 2024  
GI Report No LG632458067  
PRINCESS CUT

7.13 X 7.12 X 4.92 MM	Carat Weight Color Grade Clarity Grade	2.09 CARATS D VVS 2 66.1% 69% Medium Polished EXCELLENT EXCELLENT NONE None (Colorless)
-----------------------	--	---

**Comments:**  
This Laboratory Grown Diamond was created by Chemical Vapor Deposition (CVD) growth process and may include post-growth treatment.