

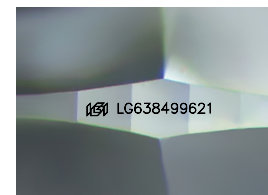
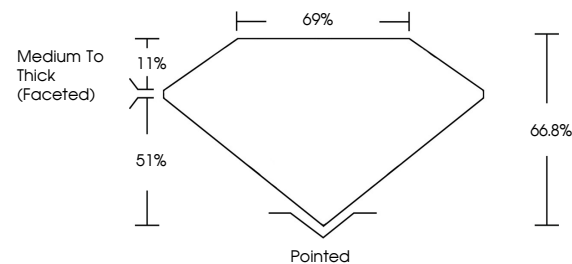


ELECTRONIC COPY

LABORATORY GROWN DIAMOND REPORT

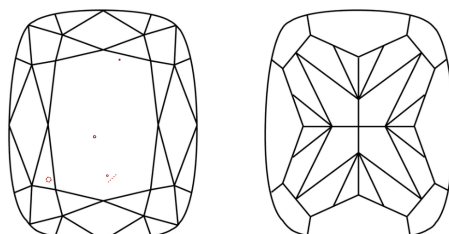
LG638499621
Report verification at igi.org

PROPORTIONS



Sample Image Used

CLARITY CHARACTERISTICS



KEY TO SYMBOLS

Red symbols indicate internal characteristics.
Green symbols indicate external characteristics.

COLOR

D E F G H I J Faint Very Light Light

CLARITY

| IF | VVS ¹⁻² | VS ¹⁻² | SI ¹⁻² | I ¹⁻³ |
|---------------------|-----------------------------|------------------------|-------------------|------------------|
| Internally Flawless | Very Very Slightly Included | Very Slightly Included | Slightly Included | Included |

LABORATORY GROWN DIAMOND REPORT



June 11, 2024

IGI Report Number **LG638499621**Description **LABORATORY GROWN DIAMOND**

Shape and Cutting Style **CUSHION MODIFIED
BRILLIANT**

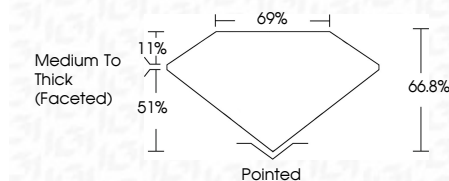
Measurements 7.66 X 6.66 X 4.45 MM

GRADING RESULTS

Carat Weight 2.02 CARATS

Color Grade **E**

Clarity Grade VS 1



ADDITIONAL GRADING INFORMATION

Polish **EXCELLENT**Symmetry **EXCELLENT**Fluorescence NONEInscription(s) LG638499621

Comments: This Laboratory Grown Diamond was created by Chemical Vapor Deposition (CVD) growth process.
Type IIa



IG

www.igi.org

© IGI 2020, International Gemological Institute

FD - 10 20



THIS DOCUMENT WAS PRODUCED WITH THE FOLLOWING SECURITY MEASURES: SPECIAL DOCUMENT PAPER, INK SCREENS, WATERMARK, BACKGROUND DESIGNS, HOLOGRAM AND OTHER SECURITY FEATURES NOT LISTED AND DO EXCEED DOCUMENT SECURITY INDUSTRY GUIDELINE

June 11, 2024
 CGI Report No LG638499621
 DISCUSSION MODIFIED RRI111ANT

| | |
|------------------------------|---------------------------|
| 7.66 X 6.66 X 4.45 MM | |
| Carat Weight | 2.02 CARATS |
| Color Grade | E |
| Clarity Grade | VS 1 |
| Depth | 66.8% |
| Table | 69% |
| Girdle | Medium To Thick (girdled) |
| Quiet | Pointed |
| Polish | EXCELLENT |
| Symmetry | EXCELLENT |
| Fluorescence | NONE |
| Comments | see listing page 21 |

Comments:
This Laboratory Grown Diamond was created by Chemical Vapor Deposition (CVD) growth process.