

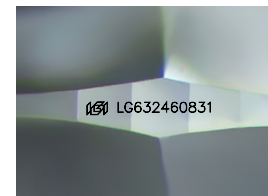
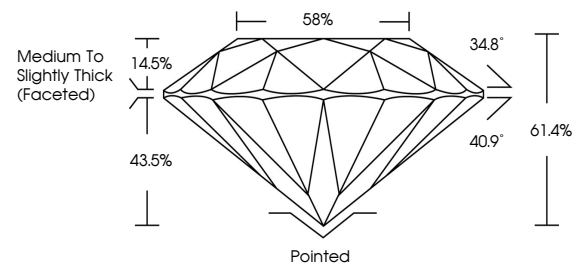


**ELECTRONIC COPY**

## LABORATORY GROWN DIAMOND REPORT

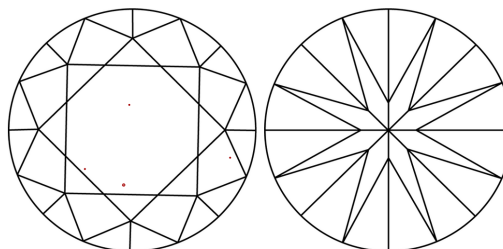
LG632460831  
Report verification at [igi.org](https://igi.org)

## PROPORTIONS



Sample Image Used

## CLARITY CHARACTERISTICS



## KEY TO SYMBOLS

Red symbols indicate internal characteristics.  
Green symbols indicate external characteristics.

## COLOR

D E F G H I J Faint Very Light Light

## CLARITY

IF VWS<sup>1-2</sup> VS<sup>1-2</sup> S<sup>1-2</sup> |<sup>1-3</sup>

Internally Flawless	Very Very Slightly Included	Very Slightly Included	Slightly Included	Included
------------------------	--------------------------------	---------------------------	----------------------	----------

## LABORATORY GROWN DIAMOND REPORT



June 14, 2024

IGI Report Number **LG632460831**Description **LABORATORY GROWN DIAMOND**Shape and Cutting Style **ROUND BRILLIANT**

Measurements	8.68 - 8.74 X 5.35 MM
--------------	-----------------------

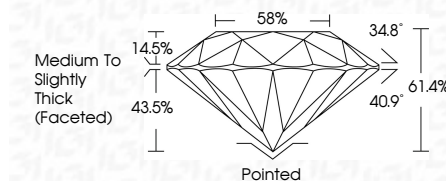
## GRADING RESULTS

Carat Weight **2.50 CARATS**

Color Grade

Clarity Grade VS 1

Cut Grade **IDEAL**



### ADDITIONAL GRADING INFORMATION

Polish EXCELLENT

Symmetry **EXCELLENT**Fluorescence **NONE**Inscription(s)  LG632460831

Comments: This Laboratory Grown Diamond was created by Chemical Vapor Deposition (CVD) growth process.

Type IIa



June 14, 2024	GI Report No. LG502460831	ROUND BRILLIANT	6.68 - 6.74 X 5.35 MM	Carat Weight	2.50 CARATS	F	VS 1	IDEAL	61.4%	59%	Medium To Slightly Thick (rounded)	Pointed	EXCELLENT	EXCELLENT	NONE	lg502460831	Comments: This Laboratory Grown Diamond was created by Chemical Vapor Deposition (CVD) growth process.
				Color Grade			Clarity Grade		Depth	Table	Girdle	Culet	Polish	Symmetry	Fluorescence	Inscription(s)	Type IIA