

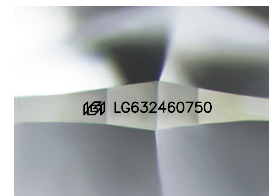
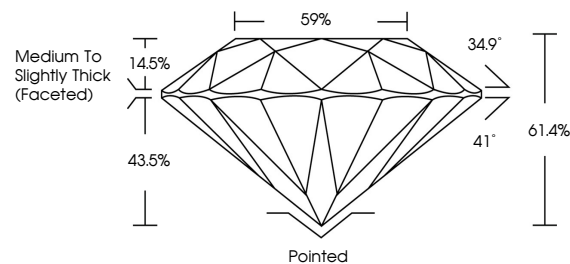


ELECTRONIC COPY

LABORATORY GROWN DIAMOND REPORT

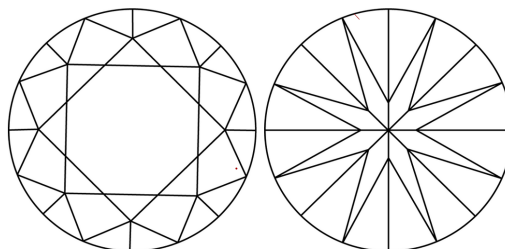
LG632460750
Report verification at igi.org

PROPORTIONS



Sample Image Used

CLARITY CHARACTERISTICS



KEY TO SYMBOLS

Red symbols indicate internal characteristics.
Green symbols indicate external characteristics.

COLOR

D E F G H I J Faint Very Light Light

CLARITY

IF WS¹⁻² VS¹⁻² SI¹⁻² I¹⁻³

Internally Flawless	Very Very Slightly Included	Very Slightly Included	Slightly Included	Included
------------------------	--------------------------------	---------------------------	----------------------	----------

LABORATORY GROWN DIAMOND REPORT



June 14, 2024

IGI Report Number **LG632460750**

Description	LABORATORY GROWN DIAMOND
-------------	--------------------------

Shape and Cutting Style **ROUND BRILLIANT**

Measurements 8.15 - 8.19 X 5.01 MM

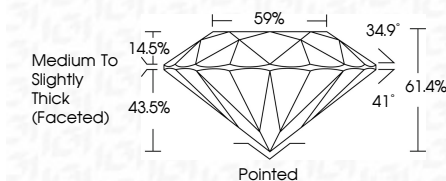
GRADING RESULTS

Carat Weight **2.06 CARATS**

Color Grade F

Clarity Grade **VVS 1**

Cut Grade **IDEAL**



ADDITIONAL GRADING INFORMATION

Polish **EXCELLENT**Symmetry **EXCELLENT**Fluorescence **NONE**Inscription(s) LG632460750

Comments: This Laboratory Grown Diamond was created by Chemical Vapor Deposition (CVD) growth process.
Type IIa



© IGI 2020, International Gemological Institute

FD - 10 20

www.igi.org

THIS DOCUMENT WAS PRODUCED WITH THE FOLLOWING SECURITY MEASURES: SPECIAL DOCUMENT PAPER, INK SCREENS, WATERMARK, BACKGROUND DESIGNS, HOLOGRAM AND OTHER SECURITY FEATURES NOT LISTED AND DO EXCEED DOCUMENT SECURITY INDUSTRY GUIDELINES

June 14, 2024	GI Report No. LG3240750	2.0x CARATS	WS 1	Ported	Comments: Grown Diamond was created by CVD Deposition (CVD) growth process. Type IIa
ROUND BRILLIANT		F	IDEAL	EXCELLENT	
			61.4%	EXCELLENT	
			59%	NONE	
			Medium to Slightly Thick (Faceted)	169 LG3240750	
	18 x 18 x 5.01 MM				
	Carat Weight	Color Grade	Clarity Grade	Cut Grade	Depth
				Table	Girdle
				Culet	Symmetry
				Polish	Fluorescence
					Inscription(s)