

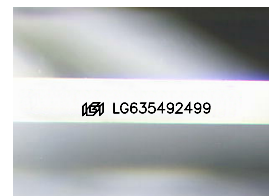
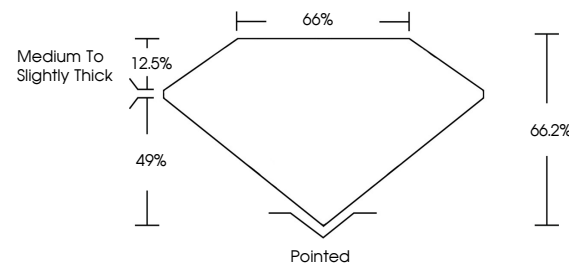


**ELECTRONIC COPY**

## LABORATORY GROWN DIAMOND REPORT

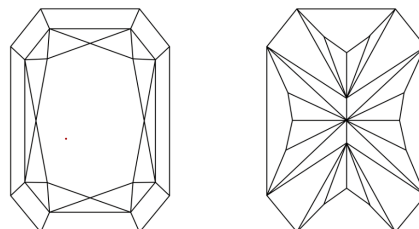
LG635492499  
Report verification at [igi.org](https://igi.org)

## PROPORTIONS



Sample Image Used

## CLARITY CHARACTERISTICS



## KEY TO SYMBOLS

Red symbols indicate internal characteristics.  
Green symbols indicate external characteristics.

## COLOR

D E F G H I J Faint Very Light Light

## CLARITY

IF	VVS <sup>1,2</sup>	VS <sup>1,2</sup>	SI <sup>1,2</sup>	I <sup>1,3</sup>
Internally Flawless	Very Very Slightly Included	Very Slightly Included	Slightly Included	Included



© IGI 2020, International Gemological Institute

FD - 10 20

**www.igi.org**

## DIAMOND REPORT



May 22, 2024

IGI Report Number **LG635492499**Description **LABORATORY GROWN DIAMOND**

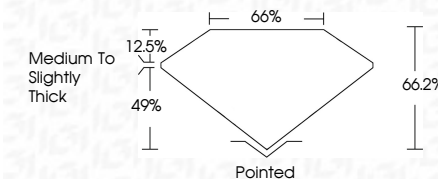
Shape and Cutting Style

Measurements **9.68 X 6.68 X 4.42 MM**

## GRADING RESULTS

Carat Weight **2.53 CARATS**

Color Grade E

Clarity Grade WS 2

### ADDITIONAL GRADING INFORMATION

Polish EXCELLENT

Symmetry **EXCELLENT**Fluorescence NONEInscription(s)  LG635492499

Comments: This Laboratory Grown Diamond was created by Chemical Vapor Deposition (CVD) growth process and may include post-growth treatment.  
Type IIa



<b>May 22, 2024</b>	
<b>GJ Report No. LG635492499</b>	
<b>CUT CORNERED RECT. MODIFIED BRILLIANT</b>	
<b>2.63 CARATS</b>	
<b>Color</b> Grade	<b>E</b>
<b>Clarity</b> Grade	<b>VVS 2</b>
<b>Depth</b>	<b>66.2%</b>
<b>Table</b>	<b>66%</b>
<b>Medium to Slightly Thick</b>	
<b>Quiet</b>	<b>Poished</b>
<b>Polish</b>	<b>EXCELLENT</b>
<b>Symmetry</b>	<b>EXCELLENT</b>
<b>Fluorescence</b>	<b>NONE</b>
<b>(#) LG635492499</b>	

**Comments:**  
 The Laboratory Grown Diamond was noted as having been produced via CVD growth process and may include post-growth treatment.  
 type IIG