

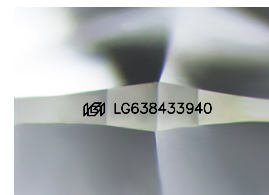
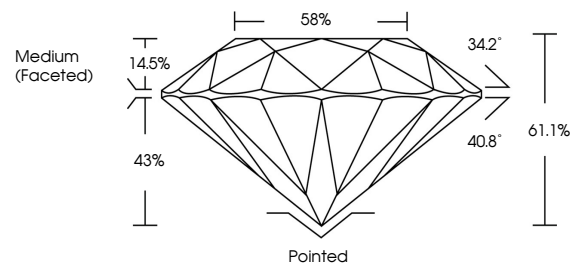


ELECTRONIC COPY

LABORATORY GROWN DIAMOND REPORT

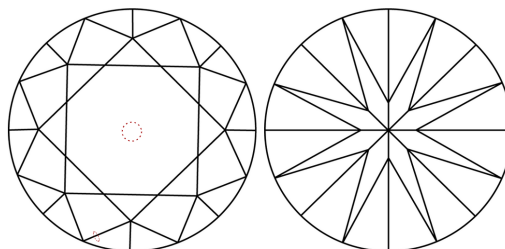
LG638433940
Report verification at igi.org

PROPORTIONS



Sample Image Used

CLARITY CHARACTERISTICS



KEY TO SYMBOLS

Red symbols indicate internal characteristics.
Green symbols indicate external characteristics.

COLOR

D E F G H I J Faint Very Light Light

CLARITY

IF	VVS ^{1,2}	VS ^{1,2}	SI ^{1,2}	I ^{1,3}
Internally Flawless	Very Very Slightly Included	Very Slightly Included	Slightly Included	Included

LABORATORY GROWN DIAMOND REPORT



June 10, 2024

IGI Report Number **LG638433940**

Description	LABORATORY GROWN DIAMOND
-------------	--------------------------

Shape and Cutting Style **ROUND BRILLIANT**

Measurements 14.22 - 14.31 X 8.71 MM

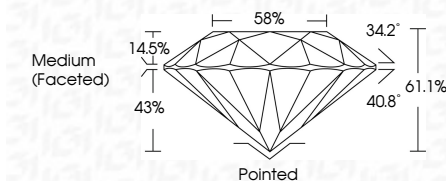
GRADING RESULTS

Carat Weight **10.89 CARATS**

Color Grade **G**

Clarity Grade VS 2

Cut Grade **IDEAL**



ADDITIONAL GRADING INFORMATION

Polish **EXCELLENT**Symmetry **EXCELLENT**Fluorescence NONEInscription(s) LG638433940

Comments: This Laboratory Grown Diamond was created by Chemical Vapor Deposition (CVD) growth process.
Type IIa



June 10, 2024	Report No. LG583435940	10.89 CARATS
ROUND BRILLIANT		
14.22 - 14.81 X 8.71 MM		
Color Grade	G	
Clarity Grade	VS 2	
Cut Grade	IDEAL	
Depth	61.1%	
Table	88%	
Gable	Medium (Faceted)	
Culet	Pointed	
Polish	EXCELLENT	
Symmetry	EXCELLENT	
Fluorescence	NONE	
Comments (inscriptions)	(g) LG583435940	
Comments:		
The Laboratory Grown Diamond was created by Chemical Vapor Deposition (CVD) growth process.		
Type IId		

