

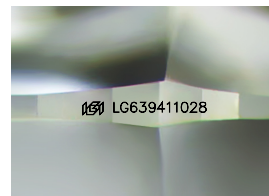
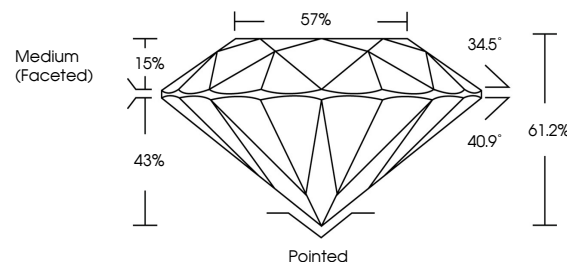


ELECTRONIC COPY

LABORATORY GROWN DIAMOND REPORT

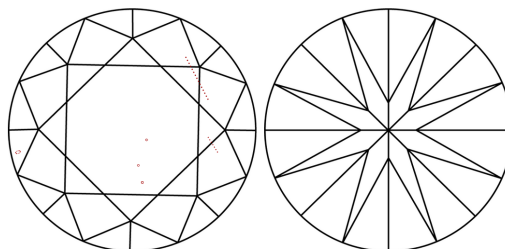
LG639411028
Report verification at lgi.org

PROPORTIONS



Sample Image Used

CLARITY CHARACTERISTICS



KEY TO SYMBOLS

Red symbols indicate internal characteristics.
Green symbols indicate external characteristics.

COLOR

D E F G H I J Faint Very Light Light

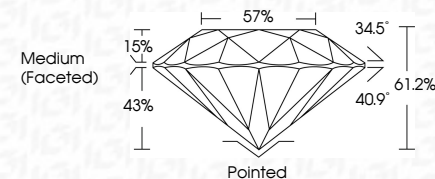
CLARITY

IF	VVS ¹⁻²	VS ¹⁻²	SI ¹⁻²	I ¹⁻³
Internally Flawless	Very Very Slightly Included	Very Slightly Included	Slightly Included	Included

LABORATORY GROWN DIAMOND REPORT



June 12, 2024	
IGI Report Number	LG639411028
Description	LABORATORY GROWN DIAMOND
Shape and Cutting Style	ROUND BRILLIANT
Measurements	11.08 - 11.10 X 6.79 MM
GRADING RESULTS	
Carat Weight	5.09 CARATS
Color Grade	E
Clarity Grade	VS 1
Cut Grade	IDEAL



ADDITIONAL GRADING INFORMATION

Polish	EXCELLENT
Symmetry	EXCELLENT
Fluorescence	NONE
Inscription(s)	 LG639411028
Comments: This Laboratory Grown Diamond was created by Chemical Vapor Deposition (CVD) growth process.	
Type IIa	



© IGI 2020, International Gemological Institute

FD - 10 20

www.igi.org

THIS DOCUMENT WAS PRODUCED WITH THE FOLLOWING SECURITY MEASURES: SPECIAL DOCUMENT PAPER, INK SCREENS, WATERMARK, BACKGROUND DESIGNS, HOLOGRAM AND OTHER SECURITY FEATURES NOT LISTED AND DO EXCEED DOCUMENT SECURITY INDUSTRY GUIDELINES

June 12, 2024
IGI Report No LG639411028
ROUND BRILLIANT

11.08 - 11.10 x 6.79 MM	Carat Weight	5.09 CARATS
	Color Grade	E
	Clarity Grade	VS 1
	Cut Grade	IDP&A
	Depth	61.2%
	Table	57%
	Girdle	Medium (Faceted)
	Culet	Pointed
	Polish	Excellent
	Symmetry	Excellent
	Fluorescence	None
	Measurements	See Certifications

Comments:
This Laboratory Grown Diamond was created by Chemical Vapor Deposition (CVD) growth process.