

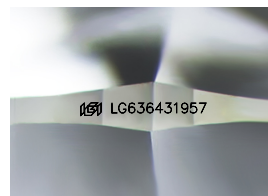
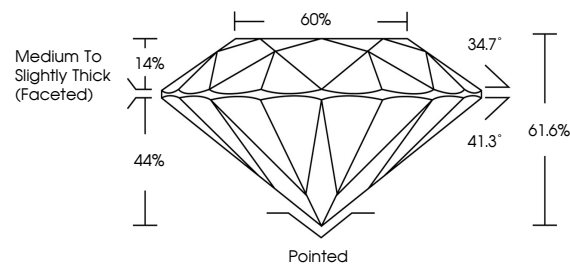


**ELECTRONIC COPY**

## LABORATORY GROWN DIAMOND REPORT

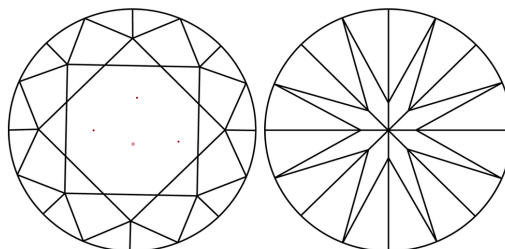
LG636431957  
Report verification at [igi.org](http://igi.org)

## PROPORTIONS



Sample Image Used

## CLARITY CHARACTERISTICS



## KEY TO SYMBOLS

Red symbols indicate internal characteristics.  
Green symbols indicate external characteristics.

## COLOR

D E F G H I J Faint Very Light Light

## CLARITY

IF	VVS <sup>1-2</sup>	VS <sup>1-2</sup>	SI <sup>1-2</sup>	I <sup>1-3</sup>
Internally Flawless	Very Very Slightly Included	Very Slightly Included	Slightly Included	Included



© IGI 2020, International Gemological Institute

FD - 10 20

**www.igi.org**

## DIAMOND REPORT



May 31, 2024

IGI Report Number **LG636431957**Description **LABORATORY GROWN DIAMOND**Shape and Cutting Style **ROUND BRILLIANT**

Measurements 8.12 - 8.16 X 5.01 MM

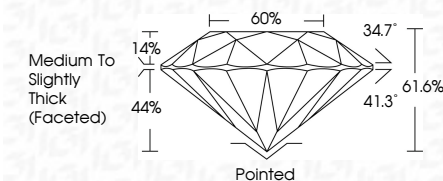
## GRADING RESULTS

Carat Weight **2.04 CARATS**

Color Grade

Clarity Grade VS 1

Cut Grade **IDEAL**



### ADDITIONAL GRADING INFORMATION

Polish **EXCELLENT**Symmetry **EXCELLENT**Fluorescence **NONE**Inscription(s)  LG636431957

Comments: This Laboratory Grown Diamond was created by Chemical Vapor Deposition (CVD) growth process.  
Type IIa



IG

May 31, 2024	GI Report No. LG56431957	2.04 CARATS	VS 1	61.5%	Medium to Slightly Thick (Faceted)	Polished	NONE	#61 LG56431957	Comments: This Laboratory Grown Diamond was created by Chemical Vapor Deposition (CVD) growth process. Type IIa
ROUND BRILLIANT		Color Weight Color Grade	Clarity Grade Cut Grade	Depth Table Girdle		Symmetry Fluorescence Surface Feature(s)			
13.12 - 8.16 x 5.01 MM									