

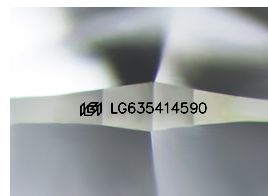
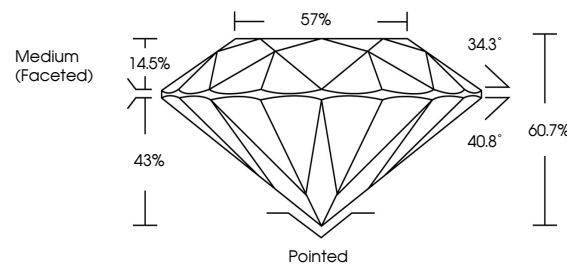


**ELECTRONIC COPY**

## LABORATORY GROWN DIAMOND REPORT

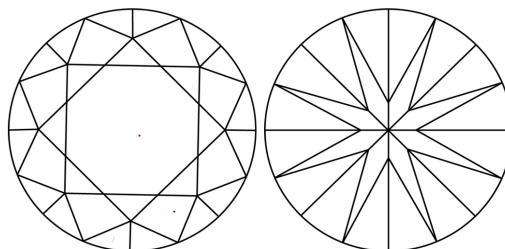
LG635414590  
Report verification at [igi.org](https://igi.org)

## PROPORTIONS



Sample Image Used

## CLARITY CHARACTERISTICS



### KEY TO SYMBOLS

Red symbols indicate internal characteristics.  
Green symbols indicate external characteristics.

**COLOR**

D E F G H I J Faint Very Light Light

## CLARITY

IF	VVS <sup>1-2</sup>	VS <sup>1-2</sup>	SI <sup>1-2</sup>	I <sup>1-3</sup>
Internally Flawless	Very Very Slightly Included	Very Slightly Included	Slightly Included	Included



© IGI 2020, International Gemological Institute

FD - 10 20

**www.igi.org**

## DIAMOND REPORT



May 24, 2024

IGI Report Number **LG635414590**Description **LABORATORY GROWN DIAMOND**Shape and Cutting Style **ROUND BRILLIANT**

Measurements	6.63 - 6.67 X 4.04 MM
--------------	-----------------------

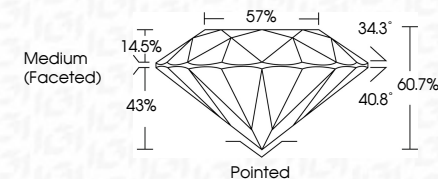
## GRADING RESULTS

Carat Weight **1.08 CARAT**

Color Grade	E
-------------	---

Clarity Grade **VVS 2**

Cut Grade **IDEAL**



### ADDITIONAL GRADING INFORMATION

Polish **EXCELLENT**Symmetry **EXCELLENT**Fluorescence **NONE**Inscription(s)  LG635414590

Comments: This Laboratory Grown Diamond was created by Chemical Vapor Deposition (CVD) growth process.  
Type IIa



May 24, 2024	GI Report No. LG385414590	
ROUND BRILLIANT		
4.63 - 4.67 X 4.04 MM	1.08 CARAT	
Color Weight		
Color Grade		
Clarity Grade	VVS 2	
Cut Grade	IDEAL	
Depth	60.7%	
Table	57%	
Girdle	Medium (Faceted)	
Culet	Pointed	
Polish	EXCELLENT	
Symmetry	EXCELLENT	
Fluorescence	NONE	
Inspection(s)		#89 LG385414590
Comments:		This Laboratory Grown Diamond was created by Chemical Vapor Deposition (CVD) growth process. Type IIa