



ELECTRONIC COPY

LABORATORY GROWN DIAMOND REPORT

September 2, 2022

IGI Report Number **LG546200142**

| | |
|-------------|-----------------------------|
| Description | LABORATORY GROWN DIAMOND |
|-------------|-----------------------------|

Shape and Cutting Style **OVAL BRILLIANT**

Measurements 10.58 X 7.86 X 4.86 MM

GRADING RESULTS

Carat Weight 2.59 CARATS

Color Grade H

Clarity Grade WS 2

ADDITIONAL GRADING INFORMATION

Polish EXCELLENT

Symmetry **EXCELLENT**

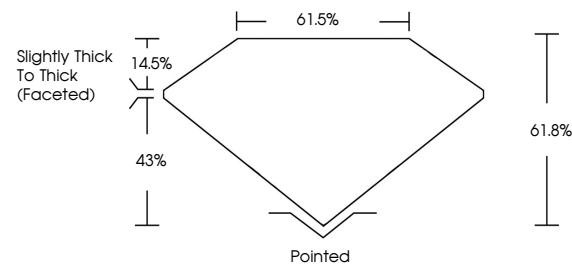
Fluorescence **NONE**

Inscription(s) LABGROWN IGI LG546200142

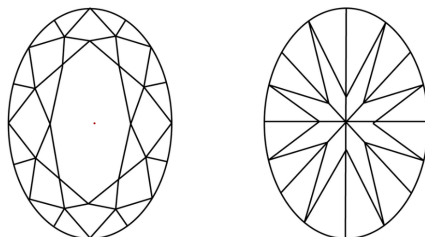
Comments: This Laboratory Grown Diamond was created by Chemical Vapor Deposition (CVD) growth process and may include post-growth treatment.
Type IIa

LG546200142

PROPORTIONS



CLARITY CHARACTERISTICS

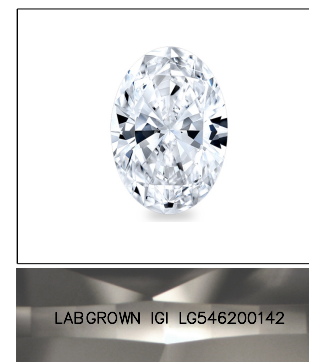


KEY TO SYMBOLS

Red symbols indicate internal characteristics.
Green symbols indicate external characteristics.

GRADING SCALES

| | | | | | | |
|-----------------------------|------------------------------|----|-----------------------------|------------------------|-------------------|-----------|
| COLOR GRADING SCALE | CL | | NC | FT | VL | LT |
| | COLORLESS D-F | | NEAR COLORLESS G-J | FAINT K-M | VERY LIGHT N-R | LIGHT S-Z |
| CLARITY (10x) GRADING SCALE | FL | IF | VVS | VS | SI | I |
| | FLAWLESS INTERNALLY FLAWLESS | | VERY VERY SLIGHTLY INCLUDED | VERY SLIGHTLY INCLUDED | SLIGHTLY INCLUDED | INCLUDED |

LASERSCRIBESM

Sample Image Used



© IGI 2020, International Gemological Institute

FD - 10 20

LABORATORY GROWN DIAMOND REPORT

| | |
|-------------------|------------------|
| September 2, 2022 | |
| IGI Report Number | LG546200142 |
| Description | LABORATORY GROWN |

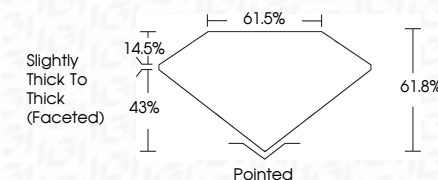
Shape and Cutting Style **OVAL BRILLIANT**

Measurements **10.58 X 7.86 X 4.86 MM**

GRADING RESULTS

Carat Weight **2.59 CARATS**

Color Grade H

Clarity Grade VVS 2

ADDITIONAL GRADING INFORMATION

Polish **EXCELLENT**Symmetry **EXCELLENT**Fluorescence **NONE**

Inscription(s) LABGROWN IGI LG546200142

Comments: This Laboratory Grown Diamond was created by Chemical Vapor Deposition (CVD) growth process and may include post-growth treatment.
Type IIa



| | |
|---|-----------------------------------|
| September 2, 2022 | 2.69 CARATS |
| GJ Report No. LG546200142 | H |
| 2VAL BRILLIANT | WIS 2 |
| 10.58 x 7.66 x 4.86 MM | 61.5% |
| | 61.5% |
| | Slightly Thick To Thick (Faceted) |
| | Pointed |
| | EXCELLENT |
| | EXCELLENT |
| | NONE |
| | LAGROWN LG546200142 |
| Comments: | |
| This Laboratory Grown Diamond was examined by a trained and certified (GIA) gemologist using standard (GVD) growth process and may include post-growth treatment. Type IIA | |