



ELECTRONIC COPY

LABORATORY GROWN DIAMOND REPORT

LG650401316
Report verification at igi.org

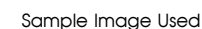
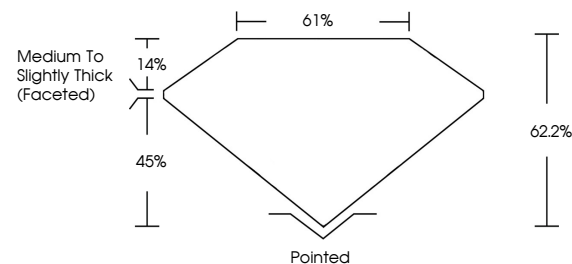
September 3, 2024	
IGI Report Number	LG650401316
Description	LABORATORY GROWN DIAMOND
Shape and Cutting Style	PEAR BRILLIANT
Measurements	10.03 X 6.49 X 4.04 MM
GRADING RESULTS	
Carat Weight	1.54 CARAT
Color Grade	E
Clarity Grade	VVS 2
Cut Grade	EXCELLENT

ADDITIONAL GRADING INFORMATION

Polish	EXCELLENT
Symmetry	EXCELLENT
Fluorescence	NONE
Inscription(s)	151 LG650401316

Comments: This Laboratory Grown Diamond was created by Chemical Vapor Deposition (CVD) growth process.
Type IIa

PROPORTIONS



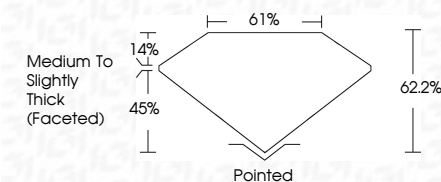
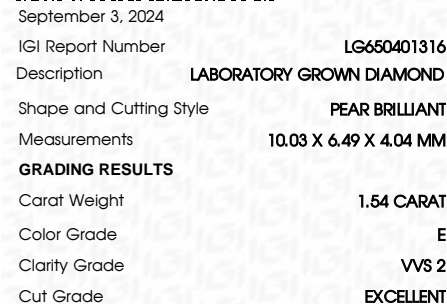
COLOR

D E F G H I J Faint Very Light Light

CLARITY

IF	VS ¹⁻²	VS ¹⁻²	SI ¹⁻²	I ¹⁻³
Internally Flawless	Very Very Slightly Included	Very Slightly Included	Slightly Included	Included

LABORATORY GROWN DIAMOND REPORT



ADDITIONAL GRADING INFORMATION

Polish	EXCELLENT
Symmetry	EXCELLENT
Fluorescence	NONE
Inscription(s)	 LG6650401316
Comments: This Laboratory Grown Diamond was created by Chemical Vapor Deposition (CVD) growth process.	
Type IIa	



© IGI 2020, International Gemological Institute

FD - 10 20

www.igi.org



September 3, 2024
IGI Report No LG650401316
PEAR BRILLIANT

1003 X 649 X 404 MM	1.54 CARAT
Carat Weight	VVS 2
Color Grade	EXCELLENT
Clarity Grade	61%
Cut Grade	Medium to Slightly Thick (Faceted)
Table	Polished
Grade	EXCELLENT
Culet	EXCELLENT
Polish	NONE
Symmetry	EXCELLENT
Fluorescence	None
Inscription(s)	see G5900131A

Comments:
This Laboratory Grown Diamond was created by Chemical Vapor Deposition (CVD) growth process.