



**ELECTRONIC COPY**

**LABORATORY GROWN DIAMOND REPORT**

**LG12127610**

Report verification at [igi.org](http://igi.org)

**LABORATORY GROWN  
DIAMOND REPORT**

**LABORATORY GROWN DIAMOND REPORT**

**LABORATORY GROWN DIAMOND REPORT**

June 27, 2023  
IGI Report Number **LG12127610**  
Description **LABORATORY GROWN  
DIAMOND**  
Shape and Cutting Style **ROUND BRILLIANT**  
Measurements **8.06 - 8.10 X 4.99 MM**

**GRADING RESULTS**

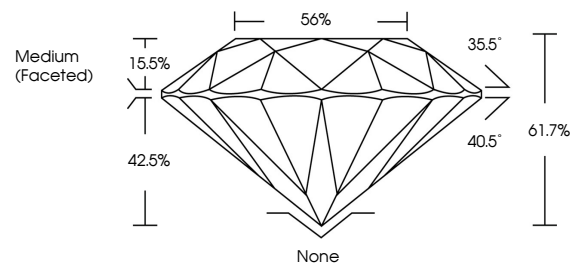
Carat Weight **2.01 CARATS**  
Color Grade **FANCY GREENISH BLUE**  
Clarity Grade **VS 1**  
Cut Grade **IDEAL**

**ADDITIONAL GRADING INFORMATION**

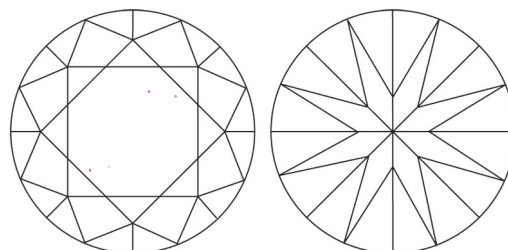
Polish **EXCELLENT**  
Symmetry **EXCELLENT**  
Fluorescence **NONE**  
Inscription(s) **LAB GROWN (IGI) LG12127610**

Comments: This Laboratory Grown Diamond was created by Chemical Vapor Deposition (CVD) growth process.  
Type IIa. Indications of post-growth treatment.

**PROPORTIONS**



**CLARITY CHARACTERISTICS**



**KEY TO SYMBOLS**

Red symbols indicate internal characteristics.  
Green symbols indicate external characteristics.

**GRADING SCALES**

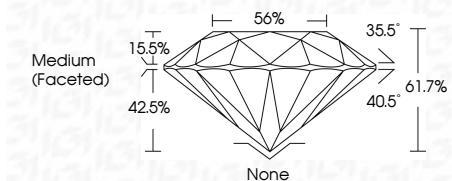
**CLARITY**

| IF                  | VVS <sup>1-2</sup>          | VS <sup>1-2</sup>      | SI <sup>1-2</sup> | I <sup>1-3</sup> |
|---------------------|-----------------------------|------------------------|-------------------|------------------|
| Internally Flawless | Very Very Slightly Included | Very Slightly Included | Slightly Included | Included         |

**COLOR**

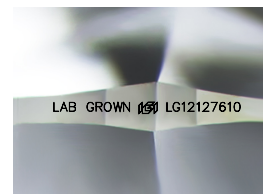
| D          | E           | F     | G             | H           | I | J | Faint | Very Light | Light |
|------------|-------------|-------|---------------|-------------|---|---|-------|------------|-------|
| Light Tint | Fancy Light | Fancy | Fancy Intense | Fancy Vivid |   |   |       |            |       |

June 27, 2023  
IGI Report Number **LG12127610**  
Description **LABORATORY GROWN  
DIAMOND**  
Shape and Cutting Style **ROUND BRILLIANT**  
Measurements **8.06 - 8.10 X 4.99 MM**  
**GRADING RESULTS**  
Carat Weight **2.01 CARATS**  
Color Grade **FANCY GREENISH BLUE**  
Clarity Grade **VS 1**  
Cut Grade **IDEAL**



**ADDITIONAL GRADING INFORMATION**

Polish **EXCELLENT**  
Symmetry **EXCELLENT**  
Fluorescence **NONE**  
Inscription(s) **LAB GROWN (IGI) LG12127610**  
Comments: This Laboratory Grown Diamond was created by Chemical Vapor Deposition (CVD) growth process.  
Type IIa. Indications of post-growth treatment.



Sample Image Used



|                 |                          |             |                     |       |       |        |                  |        |           |              |                 |  |
|-----------------|--------------------------|-------------|---------------------|-------|-------|--------|------------------|--------|-----------|--------------|-----------------|--|
| June 27, 2023   | IGI Report No LG12127610 | 2.01 CARATS | FANCY GREENISH BLUE | VS 1  | IDEAL | 56%    | Medium (Faceted) | None   | EXCELLENT | EXCELLENT    | NONE            | LAB GROWN (IGI) LG12127610   |
| ROUND BRILLIANT | 8.06 - 8.10 X 4.99 MM    | Color Grade | Clarity Grade       | Depth | Table | Girdle | Culet            | Polish | Symmetry  | Fluorescence | Inscriptions(s) | Comments: This Laboratory Grown Diamond was created by Chemical Vapor Deposition (CVD) growth process. Type IIa. Indications of post-growth treatment. |