



**ELECTRONIC COPY**

**LABORATORY GROWN DIAMOND REPORT**

LG628485511

Report verification at [igi.org](http://igi.org)

**LABORATORY GROWN  
DIAMOND REPORT**

**LABORATORY GROWN DIAMOND REPORT**

**LABORATORY GROWN DIAMOND REPORT**

April 6, 2024  
IGI Report Number **LG628485511**  
Description **LABORATORY GROWN  
DIAMOND**  
Shape and Cutting Style **PEAR BRILLIANT**  
Measurements **9.86 X 6.60 X 3.97 MM**

**GRADING RESULTS**

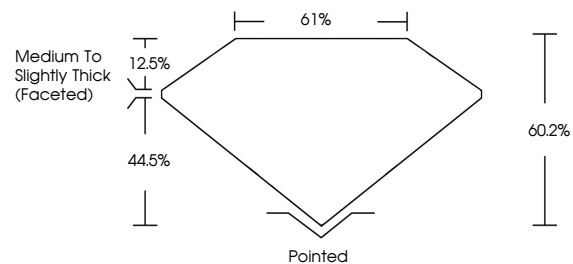
Carat Weight **1.51 CARAT**  
Color Grade **I**  
Clarity Grade **VVS 2**  
Cut Grade **EXCELLENT**

**ADDITIONAL GRADING INFORMATION**

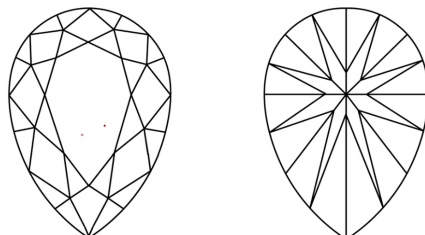
Polish **EXCELLENT**  
Symmetry **EXCELLENT**  
Fluorescence **NONE**  
Inscription(s) **IGI LG628485511**

Comments: This Laboratory Grown Diamond was created by Chemical Vapor Deposition (CVD) growth process and may include post-growth treatment. Type IIa

**PROPORTIONS**



**CLARITY CHARACTERISTICS**



**KEY TO SYMBOLS**

Red symbols indicate internal characteristics.  
Green symbols indicate external characteristics.

**GRADING SCALES**

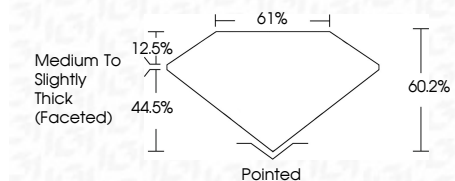
**CLARITY**

IF	VVS <sup>1-2</sup>	VS <sup>1-2</sup>	SI <sup>1-2</sup>	I <sup>1-3</sup>
Internally Flawless	Very Very Slightly Included	Very Slightly Included	Slightly Included	Included

**COLOR**

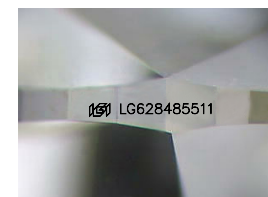
D	E	F	G	H	I	J	Faint	Very Light	Light
---	---	---	---	---	---	---	-------	------------	-------

April 6, 2024  
IGI Report Number **LG628485511**  
Description **LABORATORY GROWN  
DIAMOND**  
Shape and Cutting Style **PEAR BRILLIANT**  
Measurements **9.86 X 6.60 X 3.97 MM**  
**GRADING RESULTS**  
Carat Weight **1.51 CARAT**  
Color Grade **I**  
Clarity Grade **VVS 2**  
Cut Grade **EXCELLENT**



**ADDITIONAL GRADING INFORMATION**

Polish **EXCELLENT**  
Symmetry **EXCELLENT**  
Fluorescence **NONE**  
Inscription(s) **IGI LG628485511**  
Comments: This Laboratory Grown Diamond was created by Chemical Vapor Deposition (CVD) growth process and may include post-growth treatment. Type IIa



Sample Image Used



**IGI**

April 6, 2024  
IGI Report No LG628485511  
**PEAR BRILLIANT**  
9.86 X 6.60 X 3.97 MM  
Carat Weight **1.51 CARAT**  
Color Grade **I**  
Clarity Grade **VVS 2**  
Cut Grade **EXCELLENT**  
Depth **60.2%**  
Table **61%**  
Girdle **Medium To Slightly Thick (Faceted)**  
Culet **Pointed**  
Polish **EXCELLENT**  
Symmetry **EXCELLENT**  
Fluorescence **NONE**  
Inscriptions(s) **IGI LG628485511**  
Comments: This Laboratory Grown Diamond was created by Chemical Vapor Deposition (CVD) growth process and may include post-growth treatment. Type IIa