



**ELECTRONIC COPY**

**LABORATORY GROWN DIAMOND REPORT**

December 19, 2022  
 IGI Report Number **LG551297499**  
 Description **LABORATORY GROWN  
DIAMOND**  
 Shape and Cutting Style **ROUND BRILLIANT**  
 Measurements **6.29 - 6.33 X 3.89 MM**

**GRADING RESULTS**

Carat Weight **0.95 CARAT**  
 Color Grade **FANCY VIVID ORANGY PINK**  
 Clarity Grade **SI 2**  
 Cut Grade **IDEAL**

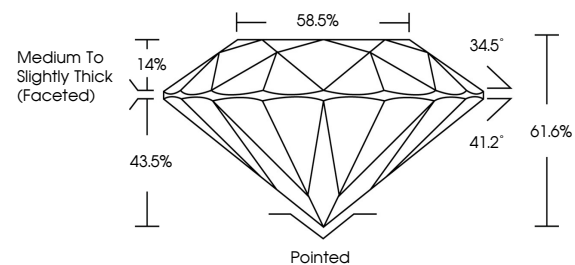
**ADDITIONAL GRADING INFORMATION**

Polish **EXCELLENT**  
 Symmetry **EXCELLENT**  
 Fluorescence **STRONG**  
 Inscription(s) **LABGROWN (LGI) LG551297499**

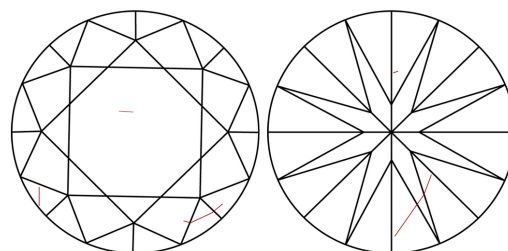
Comments: This Laboratory Grown Diamond was created by Chemical Vapor Deposition (CVD) growth process.  
 Type IIa. Indications of post-growth treatment.

LG551297499

**PROPORTIONS**



**CLARITY CHARACTERISTICS**



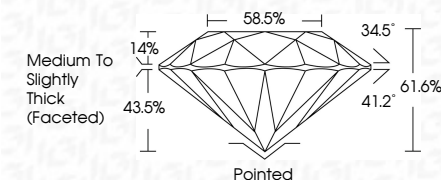
**KEY TO SYMBOLS**

Red symbols indicate internal characteristics.  
 Green symbols indicate external characteristics.

**GRADING SCALES**

COLOR GRADING SCALE	CL	NC	FT	VLT	LT	
	COLORLESS D-F	NEAR COLORLESS G-J	FAINT K-M	VERY LIGHT N-R	LIGHT S-Z	
CLARITY (10x) GRADING SCALE	FL	IF	VVS	VS	SI	I
	FLAWLESS INTERNALLY FLAWLESS	VERY VERY SLIGHTLY INCLUDED	VERY SLIGHTLY INCLUDED	SLIGHTLY INCLUDED	INCLUDED	

December 19, 2022  
 IGI Report Number **LG551297499**  
 Description **LABORATORY GROWN  
DIAMOND**  
 Shape and Cutting Style **ROUND BRILLIANT**  
 Measurements **6.29 - 6.33 X 3.89 MM**  
**GRADING RESULTS**  
 Carat Weight **0.95 CARAT**  
 Color Grade **FANCY VIVID ORANGY PINK**  
 Clarity Grade **SI 2**  
 Cut Grade **IDEAL**



**ADDITIONAL GRADING INFORMATION**

Polish **EXCELLENT**  
 Symmetry **EXCELLENT**  
 Fluorescence **STRONG**  
 Inscription(s) **LABGROWN (LGI) LG551297499**

Comments: This Laboratory Grown Diamond was created by Chemical Vapor Deposition (CVD) growth process.  
 Type IIa. Indications of post-growth treatment.



**LASERSCRIBE<sup>SM</sup>**  
 Sample Image Used



**IGI**

December 19, 2022  
 IGI Report No. **LG551297499**  
**ROUND BRILLIANT**  
 Carat Weight **0.95 CARAT**  
 Color Grade **FANCY VIVID ORANGY PINK**  
 Clarity Grade **SI 2**  
 Cut Grade **IDEAL**  
 Depth **61.6%**  
 Table **58.5%**  
 Girdle **Medium To Slightly Thick (Faceted)**  
 Culet **Pointed**  
 Polish **EXCELLENT**  
 Symmetry **EXCELLENT**  
 Fluorescence **STRONG**  
 Inscription(s) **LABGROWN (LGI) LG551297499**  
 Comments: This Laboratory Grown Diamond was created by Chemical Vapor Deposition (CVD) growth process.  
 Type IIa. Indications of post-growth treatment.