



ELECTRONIC COPY

LG628458919
Report verification at igi.org



July 24, 2024

IGI Report Number **LG628458919**

Description **LABORATORY GROWN DIAMOND**

Shape and Cutting Style **ROUND BRILLIANT**

Measurements **6.60 - 6.62 X 4.08 MM**

GRADING RESULTS

Carat Weight **1.09 CARAT**

Color Grade **FANCY VIVID PINK**

Clarity Grade **VVS 2**

Cut Grade **IDEAL**

July 24, 2024
IGI Report Number **LG628458919**
Description **LABORATORY GROWN DIAMOND**
Shape and Cutting Style **ROUND BRILLIANT**
Measurements **6.60 - 6.62 X 4.08 MM**

GRADING RESULTS

Carat Weight **1.09 CARAT**

Color Grade **FANCY VIVID PINK**

Clarity Grade **VVS 2**

Cut Grade **IDEAL**

ADDITIONAL GRADING INFORMATION

Polish **EXCELLENT**

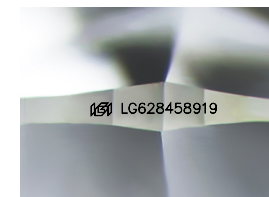
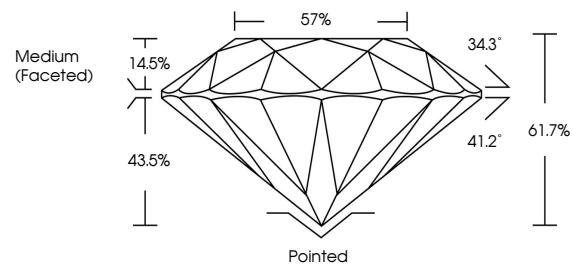
Symmetry **EXCELLENT**

Fluorescence **STRONG**

Inscription(s) **LG628458919**

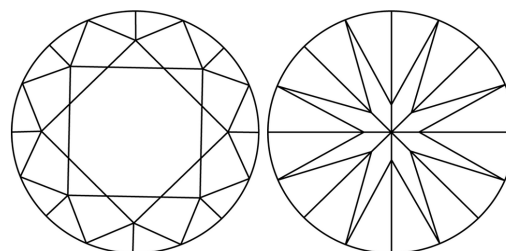
Comments: Plot not shown.
This Laboratory Grown Diamond was created by
Chemical Vapor Deposition (CVD) growth process.
Type IIa.Indications of post-growth treatment.

PROPORTIONS



Sample Image Used

CLARITY CHARACTERISTICS



KEY TO SYMBOLS

Red symbols indicate internal characteristics.
Green symbols indicate external characteristics.

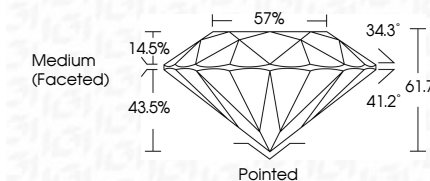
COLOR

D E F G H I J Faint Very Light Light

CLARITY

IF WS¹⁻² VS¹⁻² SI¹⁻² I¹⁻³

Internally Flawless Very Very Slightly Included Very Slightly Included Slightly Included Included



ADDITIONAL GRADING INFORMATION

Polish **EXCELLENT**

Symmetry **EXCELLENT**

Fluorescence **STRONG**

Inscription(s) **LG628458919**

Comments: Plot not shown.
This Laboratory Grown Diamond was created by
Chemical Vapor Deposition (CVD) growth process.
Type IIa.Indications of post-growth treatment.



IGI



July 24, 2024	IGI Report No LG628458919	1.09 CARAT	FANCY VIVID PINK	VVS 2	IDEAL	61.7%	57%	Medium (Faceted)	Pointed	EXCELLENT	EXCELLENT	STRONG	LG628458919
ROUND BRILLIANT	6.60 - 6.62 X 4.08 MM	Color Grade	Clarity Grade	Cut Grade	Depth	Table	Girdle						
<p>Comments: Plot not shown. This Laboratory Grown Diamond was created by Chemical Vapor Deposition (CVD) growth process. Type IIa.Indications of post-growth treatment.</p>													