



**ELECTRONIC COPY**

LG643440990  
Report verification at igi.org



August 21, 2024  
IGI Report Number **LG643440990**  
Description **LABORATORY GROWN DIAMOND**  
Shape and Cutting Style **CUT CORNERED  
RECTANGULAR MODIFIED  
BRILLIANT**  
Measurements **8.65 X 6.45 X 4.34 MM**  
**GRADING RESULTS**  
Carat Weight **1.96 CARAT**  
Color Grade **FANCY INTENSE YELLOW**  
Clarity Grade **VS 1**  
Cut Grade **EXCELLENT**

**LABORATORY GROWN DIAMOND REPORT**

August 21, 2024  
IGI Report Number **LG643440990**  
Description **LABORATORY GROWN DIAMOND**  
Shape and Cutting Style **CUT CORNERED RECTANGULAR  
MODIFIED BRILLIANT**  
Measurements **8.65 X 6.45 X 4.34 MM**

**GRADING RESULTS**

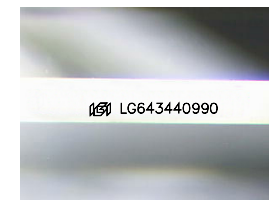
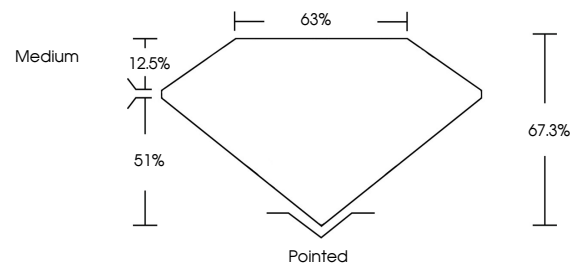
Carat Weight **1.96 CARAT**  
Color Grade **FANCY INTENSE YELLOW**  
Clarity Grade **VS 1**  
Cut Grade **EXCELLENT**

**ADDITIONAL GRADING INFORMATION**

Polish **EXCELLENT**  
Symmetry **VERY GOOD**  
Fluorescence **NONE**  
Inscription(s) **IGI LG643440990**

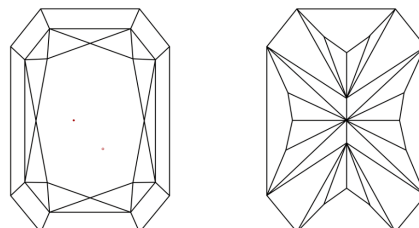
Comments: This Laboratory Grown Diamond was created by Chemical Vapor Deposition (CVD) growth process.

**PROPORTIONS**



Sample Image Used

**CLARITY CHARACTERISTICS**



**KEY TO SYMBOLS**

Red symbols indicate internal characteristics.  
Green symbols indicate external characteristics.

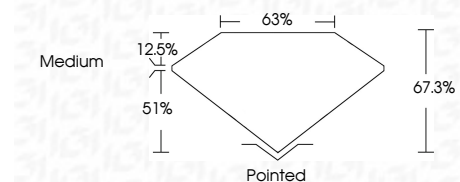
**COLOR**

D E F G H I J Faint Very Light Light

**CLARITY**

IF WS<sup>1-2</sup> VS<sup>1-2</sup> SI<sup>1-2</sup> I<sup>1-3</sup>

Internally Flawless Very Very Slightly Included Very Slightly Included Slightly Included Included



**ADDITIONAL GRADING INFORMATION**

Polish **EXCELLENT**  
Symmetry **VERY GOOD**  
Fluorescence **NONE**  
Inscription(s) **IGI LG643440990**  
Comments: This Laboratory Grown Diamond was created by Chemical Vapor Deposition (CVD) growth process.



August 21, 2024  
IGI Report No LG643440990  
CUT CORNERED RECT. MODIFIED BRILLIANT  
8.65 X 6.45 X 4.34 MM  
1.96 CARAT  
FANCY INTENSE YELLOW  
VS 1  
EXCELLENT  
67.3%  
63%  
Medium  
Pointed  
EXCELLENT  
VERY GOOD  
NONE  
IGI LG643440990  
Comments: This Laboratory Grown Diamond was created by Chemical Vapor Deposition (CVD) growth process.