



**INTERNATIONAL
GEMOLOGICAL
INSTITUTE**

ELECTRONIC COPY

LABORATORY GROWN DIAMOND REPORT

January 31, 2024
 IGI Report Number **LG616489451**
 Description **LABORATORY GROWN
DIAMOND**
 Shape and Cutting Style **ROUND BRILLIANT**
 Measurements **10.52 - 10.60 X 6.48 MM**

GRADING RESULTS

Carat Weight **4.47 CARATS**
 Color Grade **FANCY LIGHT ORANGY PINK**
 Clarity Grade **VS 1**
 Cut Grade **EXCELLENT**

ADDITIONAL GRADING INFORMATION

Polish **VERY GOOD**
 Symmetry **VERY GOOD**
 Fluorescence **SLIGHT**
 Inscription(s) **IGI LG616489451**

Comments: This Laboratory Grown Diamond was created by High Pressure High Temperature (HPHT) growth process.
 Indications of post-growth treatment.

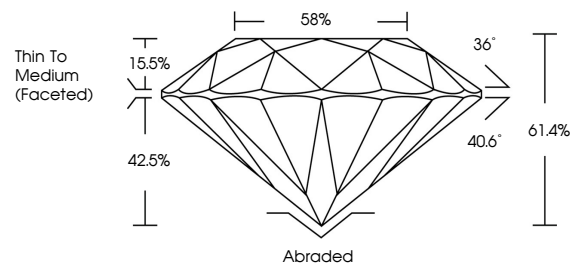
COUNTRY OF ORIGIN **UKRAINE**
 Origin purported by the supplier



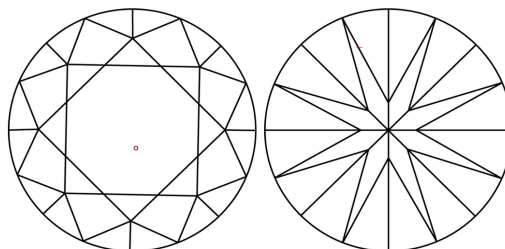
LABORATORY GROWN DIAMOND REPORT

LG616489451
 Report verification at igi.org

PROPORTIONS



CLARITY CHARACTERISTICS



KEY TO SYMBOLS

Red symbols indicate internal characteristics.
 Green symbols indicate external characteristics.

**LABORATORY GROWN
DIAMOND REPORT**

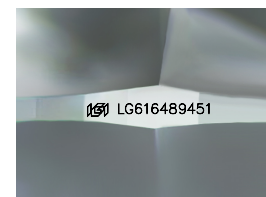
GRADING SCALES

CLARITY

IF	VVS ¹⁻²	VS ¹⁻²	SI ¹⁻²	I ¹⁻³
Internally Flawless	Very Very Slightly Included	Very Slightly Included	Slightly Included	Included

COLOR

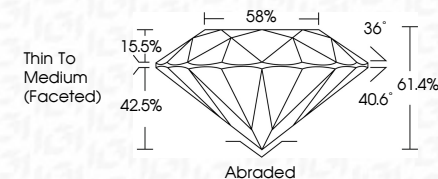
D	E	F	G	H	I	J	Faint	Very Light	Light
Light Tint	Fancy Light	Fancy	Fancy Intense	Fancy Vivid					



Sample Image Used

LABORATORY GROWN DIAMOND REPORT

January 31, 2024
 IGI Report Number **LG616489451**
 Description **LABORATORY GROWN
DIAMOND**
 Shape and Cutting Style **ROUND BRILLIANT**
 Measurements **10.52 - 10.60 X 6.48 MM**
GRADING RESULTS
 Carat Weight **4.47 CARATS**
 Color Grade **FANCY LIGHT ORANGY PINK**
 Clarity Grade **VS 1**
 Cut Grade **EXCELLENT**



ADDITIONAL GRADING INFORMATION

Polish **VERY GOOD**
 Symmetry **VERY GOOD**
 Fluorescence **SLIGHT**
 Inscription(s) **IGI LG616489451**
 Comments: This Laboratory Grown Diamond was created by High Pressure High Temperature (HPHT) growth process.
 Indications of post-growth treatment.

COUNTRY OF ORIGIN **UKRAINE**
 Origin purported by the supplier



IGI

January 31, 2024
 IGI Report No LG616489451
ROUND BRILLIANT
4.47 CARATS
 Carat Weight
FANCY LIGHT ORANGY PINK
 Color Grade
VS 1
 Clarity Grade
EXCELLENT
 Depth
61.4%
 Table
58%
 Girdle
Thin To Medium (Faceted)
 Culet
Abraded
 Polish
VERY GOOD
 Symmetry
VERY GOOD
 Fluorescence
SLIGHT
 Inscription(s)
IGI LG616489451

Comments: This Laboratory Grown Diamond was created by High Pressure High Temperature (HPHT) growth process.
 Indications of post-growth treatment.

