



**INTERNATIONAL  
GEMOLOGICAL  
INSTITUTE**

**LABORATORY GROWN DIAMOND REPORT**

**IGI LABORATORY GROWN DIAMOND IDENTIFICATION REPORT**

March 15, 2023  
 IGI Report Number **LG570373368**  
 Description **LABORATORY GROWN DIAMOND**  
 Shape and Cutting Style **PEAR BRILLIANT**  
 Measurements **7.85 X 5.24 X 3.02 MM**

**GRADING RESULTS**

Carat Weight **0.73 CARAT**  
 Color Grade **FANCY INTENSE BLUE**  
 Clarity Grade **SI 1**  
 Cut Grade **VERY GOOD**

**ADDITIONAL GRADING INFORMATION**

Polish **EXCELLENT**  
 Symmetry **EXCELLENT**  
 Fluorescence **NONE**  
 Inscription(s) **IGI LG570373368**

Comments: As Grown - No indication of post-growth treatment. This Laboratory Grown Diamond was created by High Pressure High Temperature (HPHT) growth process.

**COUNTRY OF ORIGIN : UKRAINE**

Origin purported by the supplier

*Certified*  
**SUSTAINABILITY RATED  
 DIAMOND**  
 SCS GLOBAL SERVICES

All certified diamonds come with an individual certificate. ONLY available at an accredited retailer



FOR THE SUSTAINABILITY RATED CERTIFICATE, SCAN HERE →

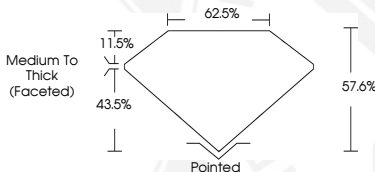
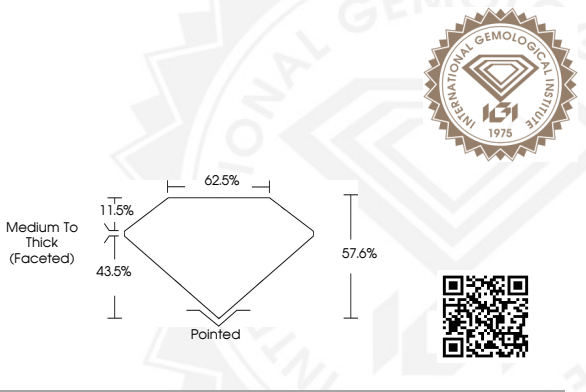
**ELECTRONIC COPY**

**LABORATORY GROWN  
DIAMOND REPORT**

**LG570373368**



Sample Image Used



**IGI LABORATORY GROWN  
DIAMOND ID REPORT**

March 15, 2023  
 IGI Report Number **LG570373368**  
**PEAR BRILLIANT**  
**7.85 X 5.24 X 3.02 MM**  
 Carat Weight **0.73 CARAT**  
 Color Grade **FANCY INTENSE BLUE**  
 Clarity Grade **SI 1**  
 Cut Grade **VERY GOOD**  
 Polish **EXCELLENT**  
 Symmetry **EXCELLENT**  
 Fluorescence **NONE**  
 Inscription(s) **IGI LG570373368**

Comments: As Grown - No indication of post-growth treatment. This Laboratory Grown Diamond was created by High Pressure High Temperature (HPHT) growth process.

**COUNTRY OF ORIGIN : UKRAINE**  
 Origin purported by the supplier

**IGI LABORATORY GROWN  
DIAMOND ID REPORT**

March 15, 2023  
 IGI Report Number **LG570373368**  
**PEAR BRILLIANT**  
**7.85 X 5.24 X 3.02 MM**  
 Carat Weight **0.73 CARAT**  
 Color Grade **FANCY INTENSE BLUE**  
 Clarity Grade **SI 1**  
 Cut Grade **VERY GOOD**  
 Polish **EXCELLENT**  
 Symmetry **EXCELLENT**  
 Fluorescence **NONE**  
 Inscription(s) **IGI LG570373368**

Comments: As Grown - No indication of post-growth treatment. This Laboratory Grown Diamond was created by High Pressure High Temperature (HPHT) growth process.

**COUNTRY OF ORIGIN : UKRAINE**  
 Origin purported by the supplier

THIS DOCUMENT WAS PRODUCED WITH THE FOLLOWING SECURITY MEASURES: SPECIAL DOCUMENT PAPER, INK SCREENS, WATERMARK, BACKGROUND DESIGN, HOLOGRAM AND OTHER SECURITY FEATURES NOT LISTED AND DO EXCEED DOCUMENT SECURITY INDUSTRY GUIDELINES.

For terms & conditions and to verify this report, please visit [www.igi.org](http://www.igi.org)