



**INTERNATIONAL
GEMOLOGICAL
INSTITUTE**

ELECTRONIC COPY

**LABORATORY GROWN
DIAMOND REPORT**

LG579362515

**IGI LABORATORY GROWN
DIAMOND ID REPORT**

May 18, 2023

IGI Report Number **LG579362515**

ROUND BRILLIANT

4.43 - 4.46 X 2.74 MM

Carat Weight	0.33 CARAT
Color Grade	FANCY DARK BLUE
Clarity Grade	SI 2
Polish	VERY GOOD
Symmetry	VERY GOOD
Fluorescence	NONE
Inscription(s)	LG579362515

Comments: As Grown - No indication of post-growth treatment. This Laboratory Grown Diamond was created by High Pressure High Temperature (HPHT) growth process.

COUNTRY OF ORIGIN : UKRAINE

Origin purported by the supplier

LABORATORY GROWN DIAMOND REPORT

IGI LABORATORY GROWN DIAMOND IDENTIFICATION REPORT

May 18, 2023

IGI Report Number **LG579362515**

Description **LABORATORY GROWN DIAMOND**

Shape and Cutting Style **ROUND BRILLIANT**

Measurements **4.43 - 4.46 X 2.74 MM**

GRADING RESULTS

Carat Weight **0.33 CARAT**

Color Grade **FANCY DARK BLUE**

Clarity Grade **SI 2**

ADDITIONAL GRADING INFORMATION

Polish **VERY GOOD**

Symmetry **VERY GOOD**

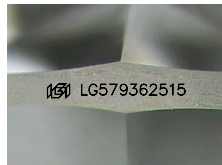
Fluorescence **NONE**

Inscription(s) **LG579362515**

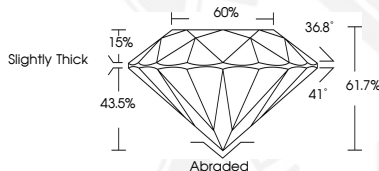
Comments: As Grown - No indication of post-growth treatment. This Laboratory Grown Diamond was created by High Pressure High Temperature (HPHT) growth process.

COUNTRY OF ORIGIN : UKRAINE

Origin purported by the supplier



Sample Image Used



**IGI LABORATORY GROWN
DIAMOND ID REPORT**

May 18, 2023

IGI Report Number **LG579362515**

ROUND BRILLIANT

4.43 - 4.46 X 2.74 MM

Carat Weight	0.33 CARAT
Color Grade	FANCY DARK BLUE
Clarity Grade	SI 2
Polish	VERY GOOD
Symmetry	VERY GOOD
Fluorescence	NONE
Inscription(s)	LG579362515

Comments: As Grown - No indication of post-growth treatment. This Laboratory Grown Diamond was created by High Pressure High Temperature (HPHT) growth process.

COUNTRY OF ORIGIN : UKRAINE

Origin purported by the supplier

THIS DOCUMENT WAS PRODUCED WITH THE FOLLOWING SECURITY MEASURES: SPECIAL DOCUMENT PAPER, INK SCREENS, WATERMARK, BACKGROUND DESIGN, HOLOGRAM AND OTHER SECURITY FEATURES NOT LISTED AND DO EXCEED DOCUMENT SECURITY INDUSTRY GUIDELINES.

For terms & conditions and to verify this report, please visit www.igi.org